

Improving Quality of Life Upgrading Aging Infrastructure

*Greater New Orleans Executives Association
August 20, 2024 Presentation*



2021 Water & Sewer Rates Comparison Around the Country



Water prices pay for treating, pumping, and delivering water, while sewer prices cover the cost of cleansing the water that goes down the drain.

Sewer prices are often higher than water prices because more energy and chemicals are required for treatment. Following the Clean Water Act, the federal government gave grants for new treatment plants during the 1970s and 1980s. Over the past three decades, however, new spending has been cut for local sewer infrastructure.

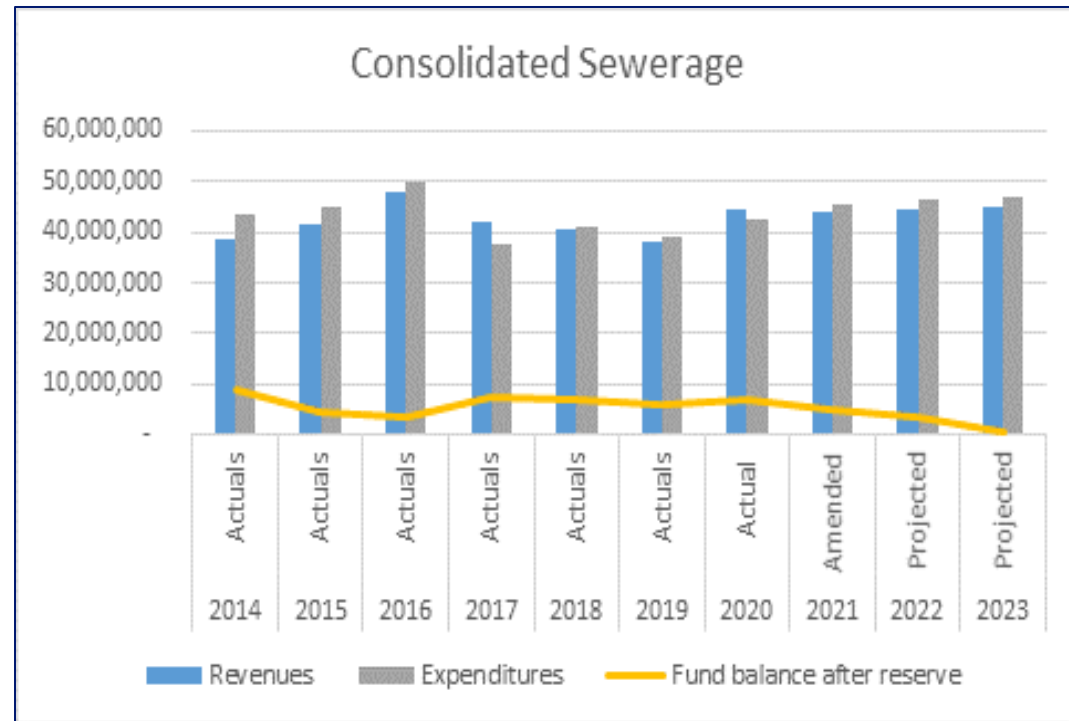
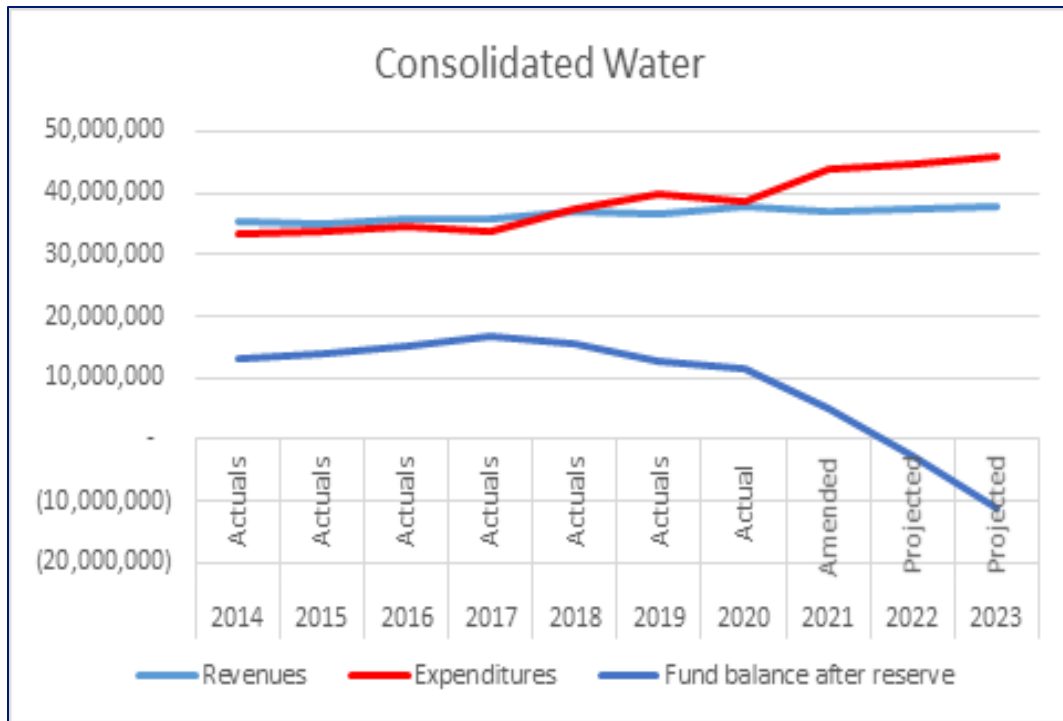
Stormwater fees are not included in every city's monthly bill. Some cities use general tax revenues to pay for projects to reduce polluted runoff from streets and parking lots. However, these projects must then compete for funds with other departments like police and schools.

Rates current as of April 1, 2015.
Monthly bill calculated for a family of four using 100 gallons per person per day.
Source: Circle of Blue research, based on utility water rates.

circle of blue



Water & Sewer Department Revenues Vs. Expenditures and Fund Balance After Reserve (2014-2023)

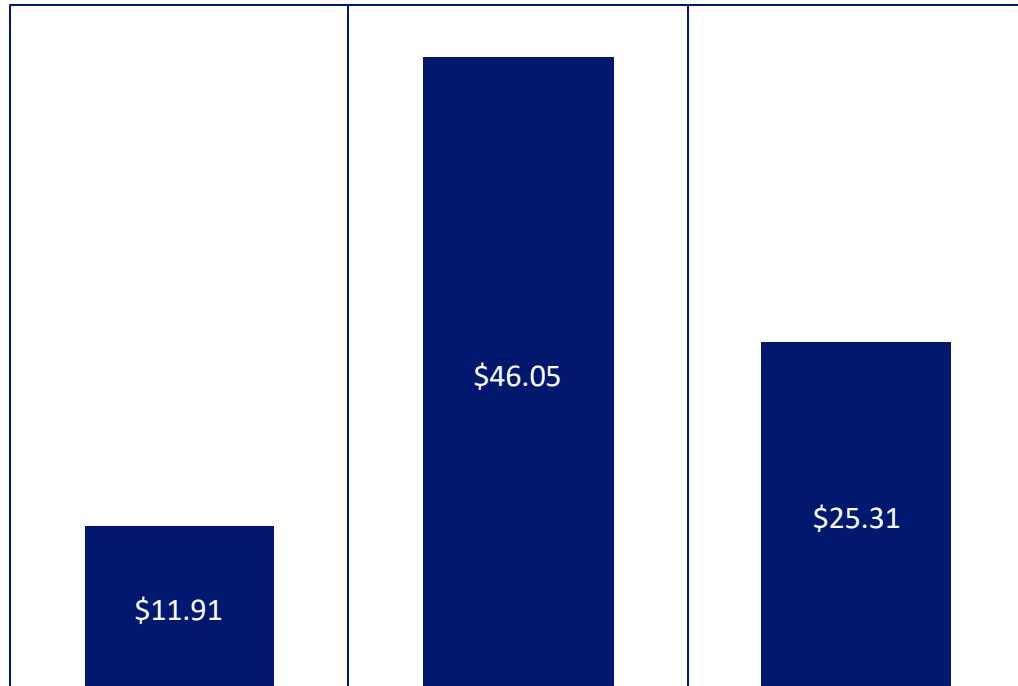


2022 Water and Sewer Rate Increases

Water Rate Comparison

Customer Usage of 6,200 (Based on Average Jefferson Parish Gallons/Month)

2021



JEFFERSON PARISH

NEW ORLEANS

BATON ROUGE

Sewer Rate Comparison

(Based on Average Jefferson Parish Customer Usage of 6,200 Gallons/Month)

2021



JEFFERSON PARISH

NEW ORLEANS

BATON ROUGE



Proposed Water Rate Increase

Average Monthly Residential Water Bill						
(Based upon Average Consumption of 6,200 Gallons/Month and Annual 1% CPI)						
Year	Service Charge	Minimum Charge for 0 to 3,000 Gal	Rate for 1,000 Gallons over 3,000 Gal	Additional Charge for 3,200 Gal	Total Bill	*Increase from Previous Year
2021	\$2.16	\$3.14	\$2.21	\$6.63	\$11.91	
2022	\$2.18	\$4.12	\$2.90	\$8.71	\$14.99	\$3.08
2023	\$2.20	\$5.12	\$3.60	\$10.80	\$18.10	\$3.11
2024	\$2.23	\$6.12	\$4.31	\$12.92	\$21.24	\$3.14
2025	\$2.25	\$7.13	\$5.02	\$15.06	\$24.41	\$3.17
2026	\$2.27	\$8.15	\$5.74	\$17.22	\$27.62	\$3.20
2027	\$2.29	\$9.19	\$6.47	\$19.40	\$30.85	\$3.24
2028	\$2.32	\$10.23	\$7.20	\$21.60	\$34.12	\$3.27
2029	\$2.34	\$11.28	\$7.94	\$23.82	\$37.42	\$3.30
2030	\$2.36	\$12.35	\$8.69	\$26.07	\$40.76	\$3.33
2031	\$2.39	\$13.42	\$9.45	\$28.34	\$44.13	\$3.37
2032	\$2.41	\$13.87	\$9.76	\$29.29	\$45.56	\$1.43
2033	\$2.44	\$14.33	\$10.09	\$30.26	\$47.00	\$1.44
2034	\$2.46	\$14.79	\$10.41	\$31.23	\$48.45	\$1.46
2035	\$2.48	\$15.26	\$10.74	\$32.21	\$49.93	\$1.47
2036	\$2.51	\$15.72	\$11.07	\$33.20	\$51.41	\$1.49
2037	\$2.53	\$16.20	\$11.40	\$34.20	\$52.91	\$1.50
2038	\$2.56	\$16.68	\$11.74	\$35.22	\$54.43	\$1.52
2039	\$2.59	\$17.16	\$12.08	\$36.24	\$55.96	\$1.53
2040	\$2.61	\$17.65	\$12.42	\$37.27	\$57.51	\$1.55
2041	\$2.63	\$18.14	\$12.77	\$38.31	\$59.07	\$1.56

***Average monthly residential water bill increases as follows:**

- 2022-2031, \$2.93 each year plus the Annual CPI adjustment
- 2032-2041, \$0.98 each year plus the Annual CPI adjustment



Proposed Sewer Rate Increase

Average Monthly Residential Sewer Bill
(Based upon 85 % of Average Water Consumption of 6,200 Gallons/Month and Annual 1% CPI)

Year	Service Charge	Minimum Charge for 0 to 3,000 Gal	Rate for 1,000 Gallons over 3,000 Gal	Additional Charge for 2,700 Gal	Total Bill	*Increase from Previous Year
2021	\$1.42	\$2.32	\$3.38	\$6.76	\$10.50	
2022	\$1.43	\$3.28	\$4.78	\$9.56	\$14.27	\$3.77
2023	\$1.45	\$4.25	\$6.19	\$12.39	\$18.08	\$3.81
2024	\$1.46	\$5.23	\$7.62	\$15.24	\$21.93	\$3.85
2025	\$1.48	\$6.22	\$9.06	\$18.12	\$25.82	\$3.89
2026	\$1.49	\$7.22	\$10.52	\$21.04	\$29.75	\$3.93
2027	\$1.51	\$8.23	\$11.99	\$23.98	\$33.71	\$3.97
2028	\$1.52	\$9.25	\$13.47	\$26.95	\$37.72	\$4.01
2029	\$1.54	\$10.28	\$14.97	\$29.95	\$41.76	\$4.05
2030	\$1.55	\$11.32	\$16.49	\$32.98	\$45.85	\$4.09
2031	\$1.57	\$12.37	\$18.02	\$36.04	\$49.98	\$4.13
2032	\$1.58	\$12.96	\$18.88	\$37.77	\$52.31	\$2.33
2033	\$1.60	\$13.56	\$19.75	\$39.51	\$54.67	\$2.36
2034	\$1.62	\$14.16	\$20.63	\$41.27	\$57.05	\$2.38
2035	\$1.63	\$14.77	\$21.52	\$43.05	\$59.45	\$2.40
2036	\$1.65	\$15.39	\$22.42	\$44.84	\$61.88	\$2.43
2037	\$1.67	\$16.01	\$23.33	\$46.66	\$64.34	\$2.45
2038	\$1.68	\$16.64	\$24.24	\$48.49	\$66.81	\$2.48
2039	\$1.70	\$17.28	\$25.17	\$50.34	\$69.32	\$2.50
2040	\$1.72	\$17.92	\$26.10	\$52.21	\$71.84	\$2.53
2041	\$1.73	\$18.57	\$27.05	\$54.10	\$74.40	\$2.55

***Average monthly residential sewer bill increases as follows:**

- 2022 - 2031, \$3.63 plus the Annual CPI adjustment
- 2032 - 2041, \$1.82 plus the Annual CPI adjustment



2022 Water and Sewer Rate Increases

In 2021, Jefferson Parish Council approved graduated service rate increases for the Water and Sewer systems from 2022 through 2041.

Jefferson Parish secured bond issuances to immediately improve both systems

\$192,000,000 bonded for the 2022 Water Program

\$100,000,000 bonded for the 2022 Sewer Program

Rate Increases will fund the following major programs:

Water Pipe Replacement - \$790 Million from 2022 thru 2041

Sewer Pipe Replacement - \$800 Million from 2022 thru 2041



2022 Water Bond Program

East Bank Water Plant Intake Rehabilitation

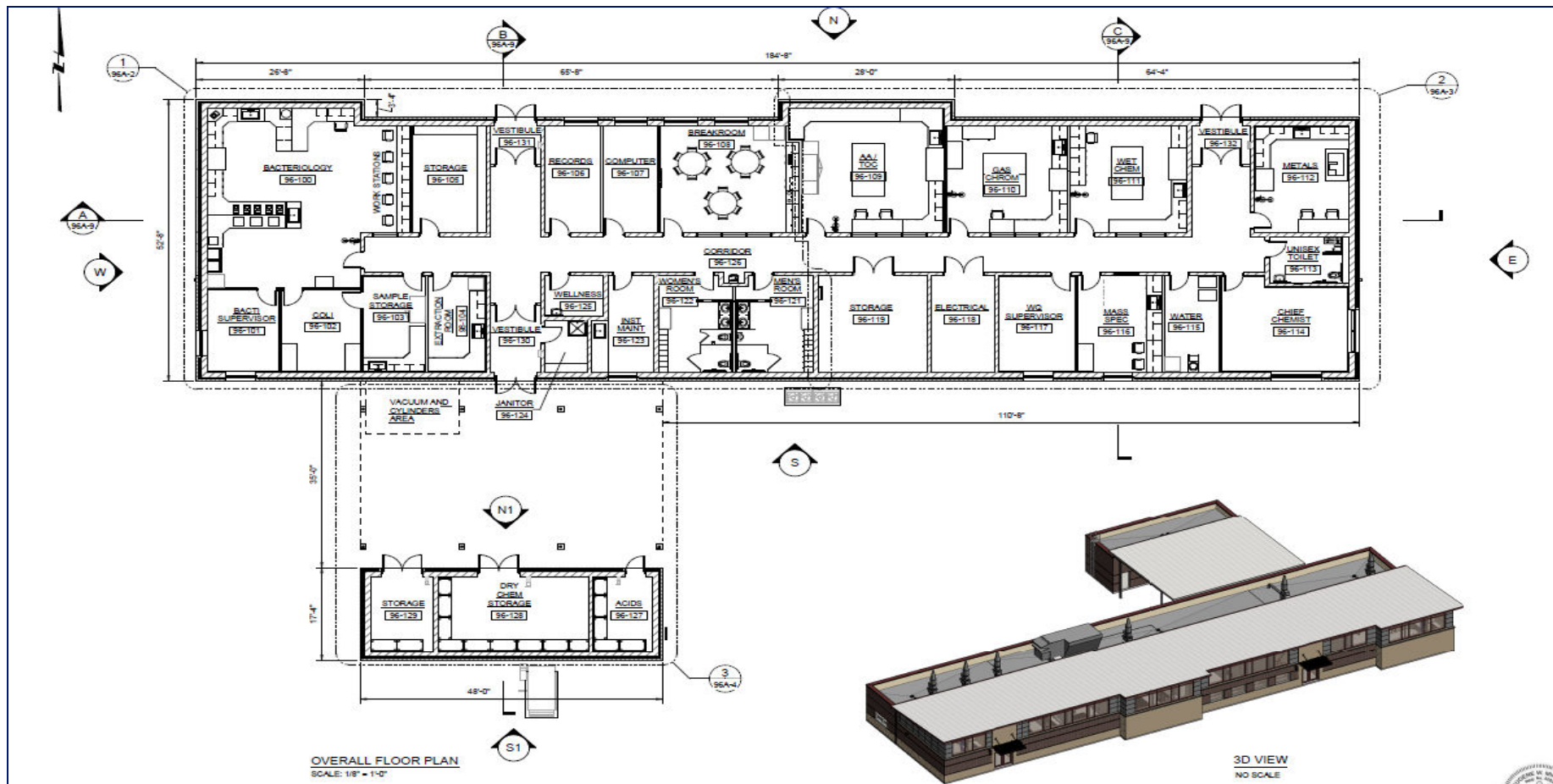
Blue House raw water intake rehabilitation (\$7.5 million) – construction completed & Levee Pump Station raw water intake rehabilitation (\$8 million) (Estimated Bid date – Summer 2025)



2022 Water Bond Program

New Jefferson Parish East Bank Water Quality Laboratory

(\$12.5 Million) (Construction 70% Complete)



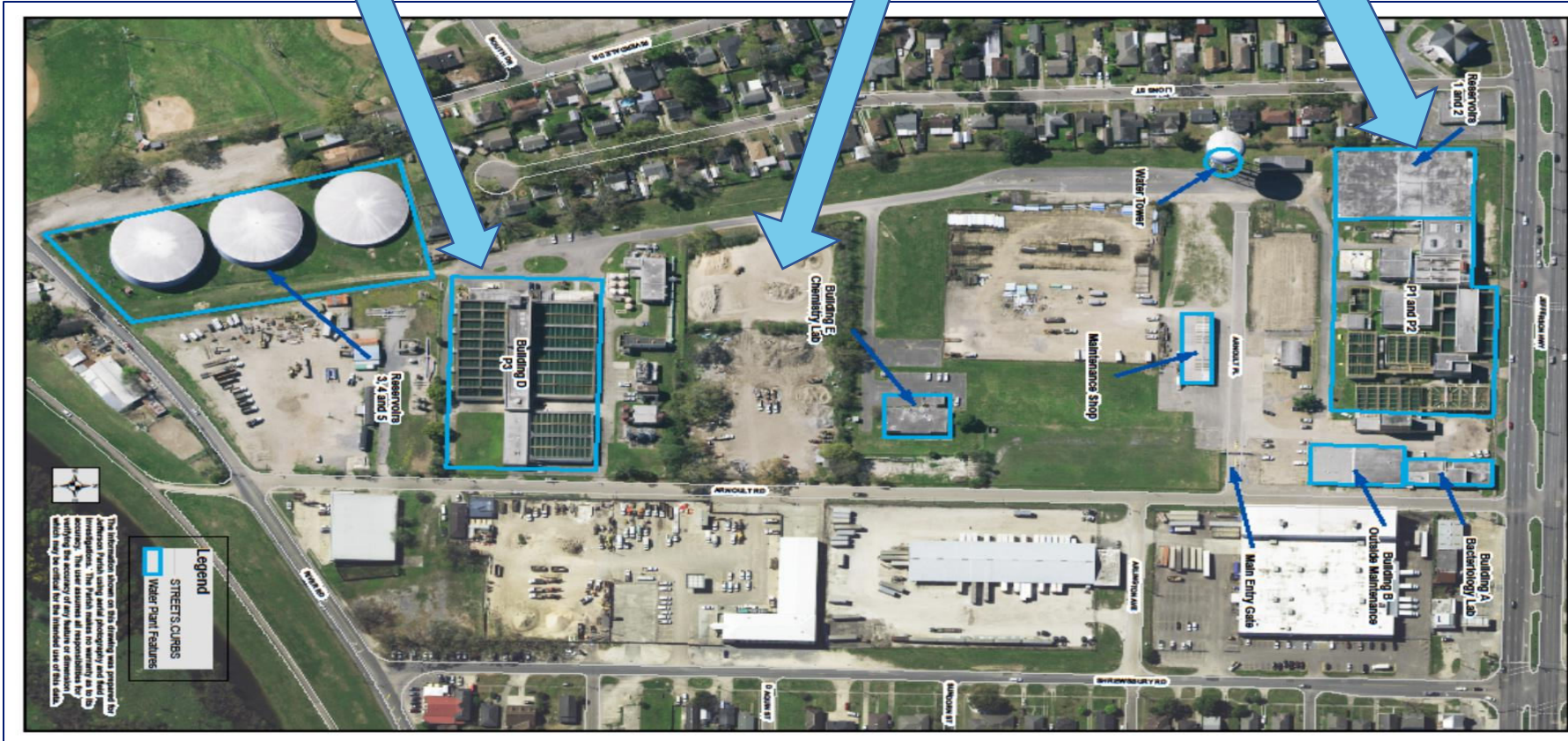
2022 Water Bond Program

New East Bank P4 Water Treatment Plant

P3 – 1969
with 1990 Upgrade
40 MGD

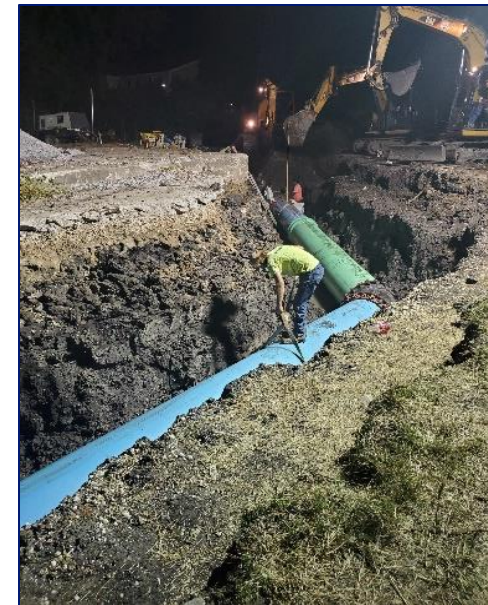
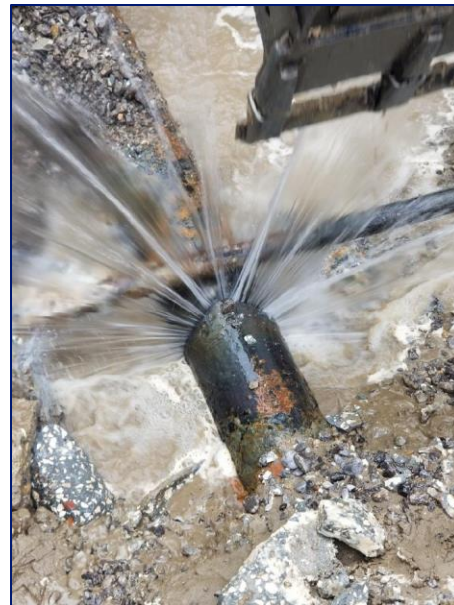
Proposed \$120 Million P4 Site
40 MGD (Expansion to 60 MGD)
Estimated Bid Date - 2026

P1 - 1931
P2 – 1955
12 MGD



\$790 Million - 20 Year Water Pipeline Infrastructure Program

All of the underground infrastructure is aging; much of this was put in place in the 1950's. The Jefferson Parish Water Department responds to approximately 200 water leaks per week.



\$790 Million - 20 Year Water Pipeline Infrastructure Program Parish-Wide Priority Main Line Replacement

9 year outlook is under design

<u>Year</u>	<u>Project Description</u>	<u>Project Cost</u>	
1&2	Live Oak Blvd. (S. Kenner Ave. - Willswood Ln.)(36" Transmission Line - 1.9 Miles) Jefferson Hwy. (Bailey St. - Plantation Rd.)(14" Transmission Line - 1.4 Miles)	\$ 4,659,010	\$15,215,140
3	Lapalco Blvd (Belle Chasse Hwy - Harvey Canal)(24" to 36" Transmission Line - 3.0 Miles)	\$20,604,345	
4	Jefferson Hwy. (Bailey St. - Filmore St.) (8" to 12" Distribution Line - 4.1 Miles) David (W Met/Airline); Hickory (Airline/Stable); Saints (David/Eisenhower)(8"/12" Distr Line - 1.7 Miles) Causeway, Ridgelake (Veterans/14th); 15th, Veterans (Causeway/Tolmas) (8" to 12" Distr Line - 2.9 Miles)	\$12,378,521 \$ 7,346,717	\$ 4,387,734
5	Causeway Blvd. (Jefferson Hwy. - Derbigny St.) (18" Transmission Line - 1.1 Miles) Shrewsbury Neighborhood (Lausat, Labarre, Claiborne, Airline) (8" to 12" Distribution Line - 1.9 Miles) Jefferson Heights Neighborhood (Andover, Saia, Westbury, Montford, Burns, Scott) (8" Distr Line - 1.9 Miles) 26th, 27th, 28th (I-10 Service Rd/Met. Lawn); Ridgelake Dr. (W. Nap./Veterans)(8"/12" Distr Line - 2.4 Miles) Veterans Hwy. (Crestview Ave. - Airport Access Rd.) (24" Transmission Line - 1.8 Miles)	\$ 4,864,531 \$ 6,133,900 \$10,322,849	\$ 4,344,709 \$ 530,132
6&7	Jefferson Hwy. (Hickory St.- Elmwood Park Blvd.) (8" to 12" Distribution Line - 1.0 Miles) Shannon Ln. E & W, Kindall Ln. (8" to 12" Distribution Line - 0.9 Miles) Shrewsbury Neighborhood (L&A, Access Rd., K&B, McDermott, Earhart) (8" to 12" Distr Line - 1.7 Miles) Lakeside Mall: N. Causeway Blvd. (Veterans Blvd. - 14th St.) (8" to 12" Distribution Line - 2.4 Miles) Duncan Canal (W. Esplanade Ave. - Jackson St.) (42" Transmission Line - 3.8 Miles)	\$ 2,978,930	\$ 2,292,722 \$ 4,928,577 \$ 6,051,803 \$38,124,215
8&9	Metairie Terrace South Neighborhood (Shrewsbury, Arnoult, Katlan, Lausat, Hullen, Claiborne, Jimco) (8"/12" Distr Line - 1.6 Miles) Ivy (Little Farms/Market), Little Farms (Russel/Mistletoe), Airline (Little Farms/Elm), Elm (Versailles/Market), N. Laurel & N. Meadow (Airline/Market), Market (N. Meadow/N. Dilton) (8" Distr Line - 1.6 Miles) Central (Karen/Morris); Karen (Norman/Canton); Newman (Karen/Hilton) (8" to 12" Distr Line - 1.7 Miles) N. I-10 Service Rd. (Harvard/Cleary); S. I-10 Service Rd. (Lemon/Pasadena) (8"/12" Distr Line - 2.8 Miles) N. Causeway Blvd (Melvil Dewey/5th); WB West Esp. Ave (N. Hullen/Ridgelake); EB West Esp. Ave (Severn/Tolmas); Village Dr at Causeway Plaza Office Complex (8" to 12" Distribution Line - 1.7 Miles) Colony (Flagler/Camphor); Elizabeth (Flagler/Ruth); Concord & Stanford (Lafreniere/Camphor); Ruth (Elise/Lorlane); Kathleen (Lorlane/Colony); Parkaire (Elise Ave/Dead End) (8" Distribution Line - 2.2 Miles) Ames (Randolph/Ames Ct); Leo Kerner (Barataria/1st Canal Crossing) (24"/36" Trans Line - 5.4 Miles) Leo Kerner Pkwy. (1st Canal Crossing - Intracoastal Waterway) (14" to 20" Transmission Line - 2.4 Miles)	\$ 3,887,082 \$ 5,413,367 \$ 8,003,576	\$ 4,114,959 \$ 4,327,673 \$ 8,154,079 \$ 5,048,267 \$40,727,128
Total			\$224,821,965



\$790 million - 20 Year Water Pipeline Infrastructure Program

Parish-Wide Priority Neighborhood Water Pipeline Replacement (Pipe Size 12" & Smaller)

10 year outlook is under design

District	Project Years 1-5	Cost (\$)
(1)	Barataria Waterway Project	\$1,500,000
(2)	* Project 3 Part 4 City of Harahan (Shannon Ln & Kindall Ln)	\$2,200,000
(3)	Estalote Ave. Replacement	\$2,000,000
(4)	Williams Blvd (Airline – W. Metairie)	\$2,000,000
(5)	Aurora Waterline (200-600 Block)	\$2,300,000
District	Project Years 6-10	Cost (\$)
(1)	Wall and Lapalco Intersection	\$2,000,000
(2)	Resor Ave (500-800 Block), Posey Ave., Fortier Ave	\$2,000,000
(3)	South New Orleans Subdivision	\$2,000,000
(4)	31 st . Phoenix to Duncan Street.	\$2,000,000
(5)	Bonnabel Blvd (100-600 Block)	\$1,500,000
Total		\$19,500,000



2022 Water Bond Program Water Tower Rehabilitation

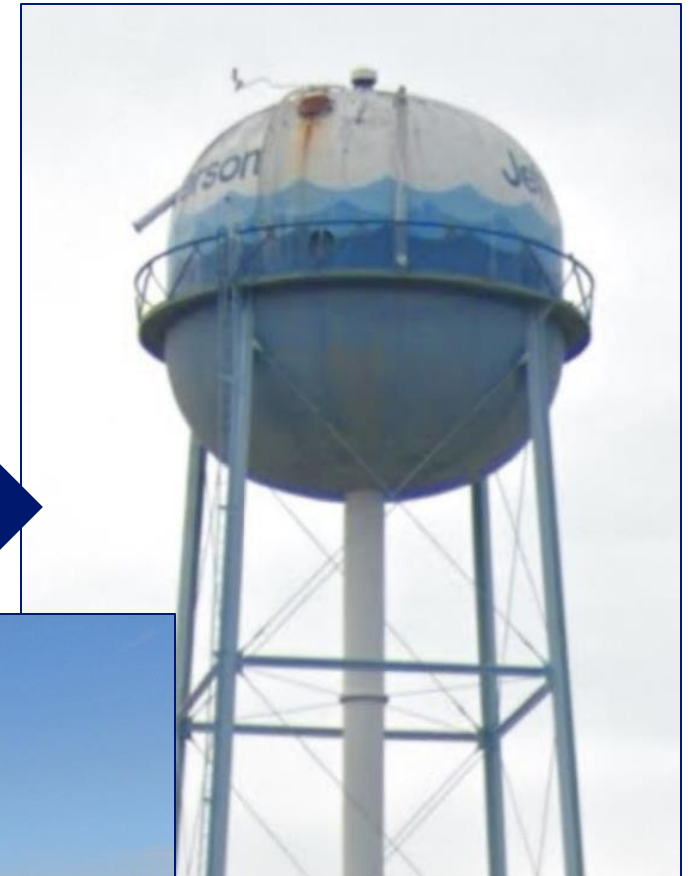
(11 towers at approx. \$15 million)

East Bank: I-10 / Causeway – **Completed**
David Drive / Veterans – **Completed**
Water Plant – **Under Construction**

West Bank: Bridge City – **Completed**
Fairmont Dr – **Out For Bid**
Marrero Rd – **Out For Bid**
Wall Blvd – **Out For Bid**
Patriot St – **Out For Bid**
Lafitte – **Out For Bid**
Barataria – **Out For Bid**

Grand Isle: Chenier – **Under Construction**

Bridge City
Water Tower



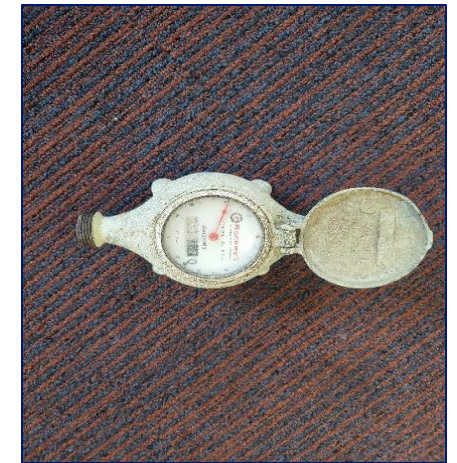
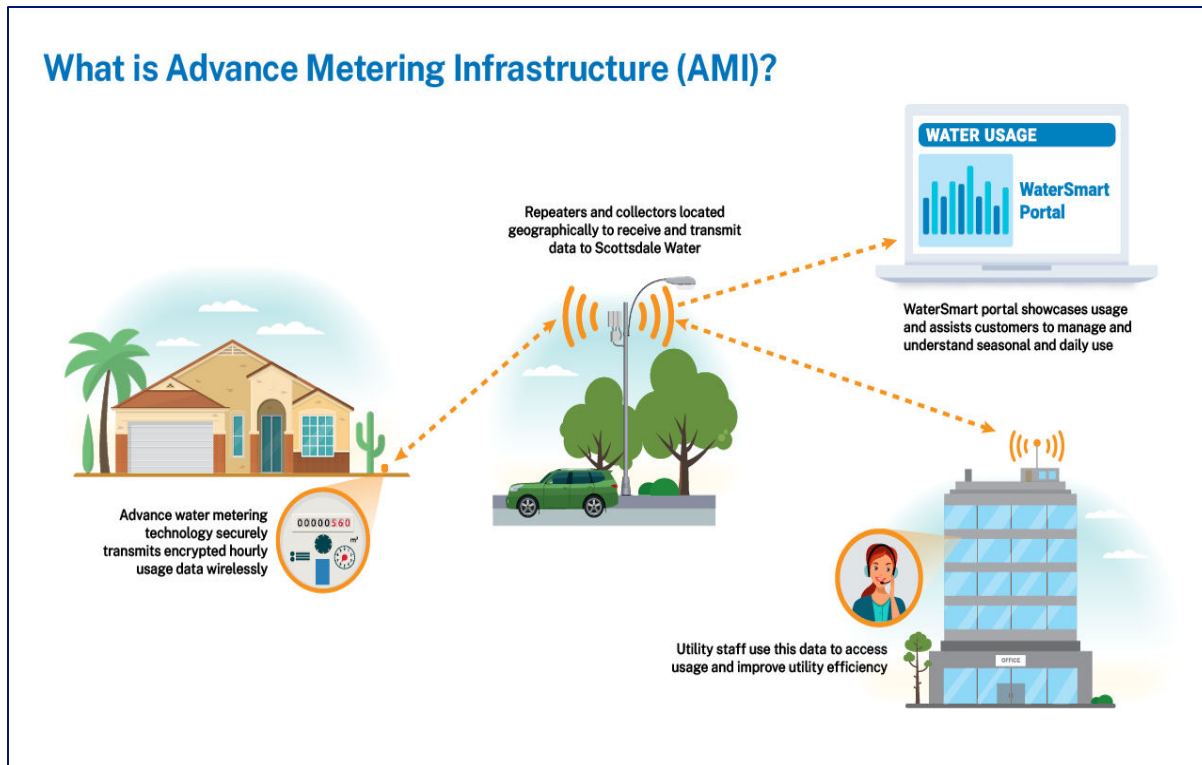
I-10 / Causeway Blvd. Water Tower



2022 Water Bond Program

Automated Water Meter Replacement

(Approx. 160,000 manual read meters) (approx. \$88 million)



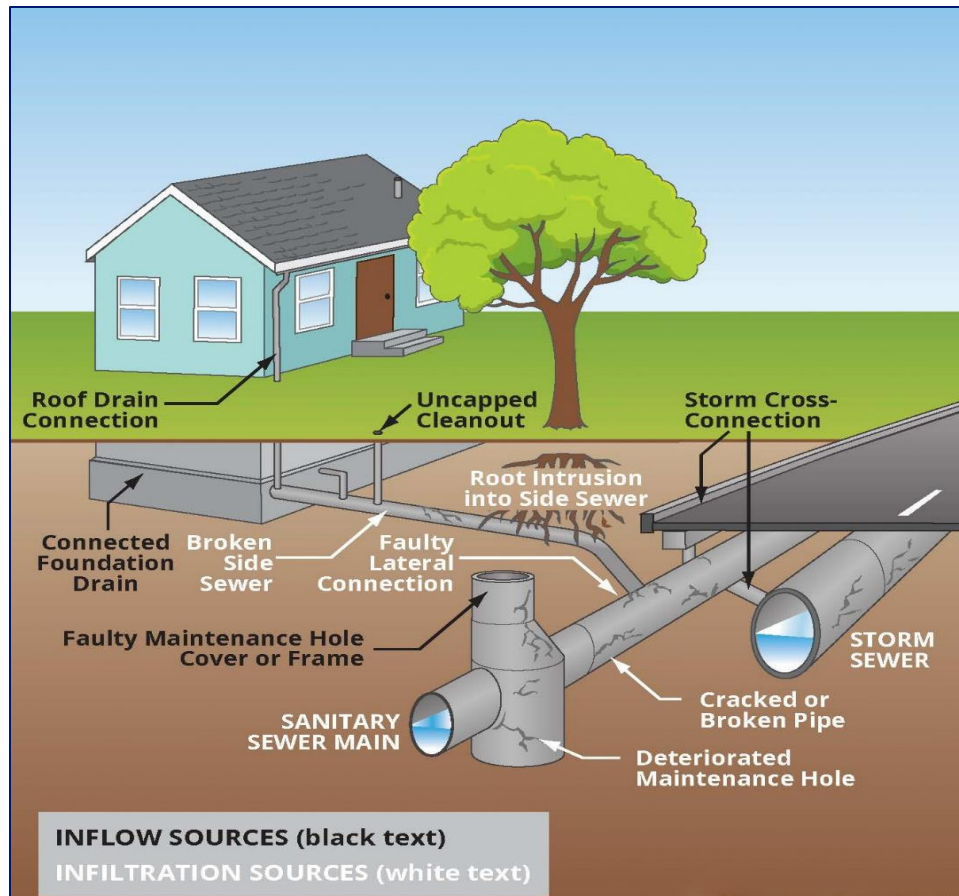
Existing Meters Require Manual Reading

Meter Replacement
September 2024 to August 2028



\$800 Million - 20 Year Sewer Pipeline Infrastructure Program Why Pipe Replacement/Rehabilitation is Necessary

All of the underground infrastructure is aging with the majority installed in the 1950's and 1960's. Open pipe joints / broken pipes allow storm water infiltration causing sewer overflows.



2021 – 8 outstanding LDEQ Compliance Orders
2024 – 3 outstanding LDEQ Compliance Orders



\$800 Million - 20 Year Sewer Pipeline Infrastructure Program Why Pipe Replacement Funding is Needed

Exorbitant Repair Costs



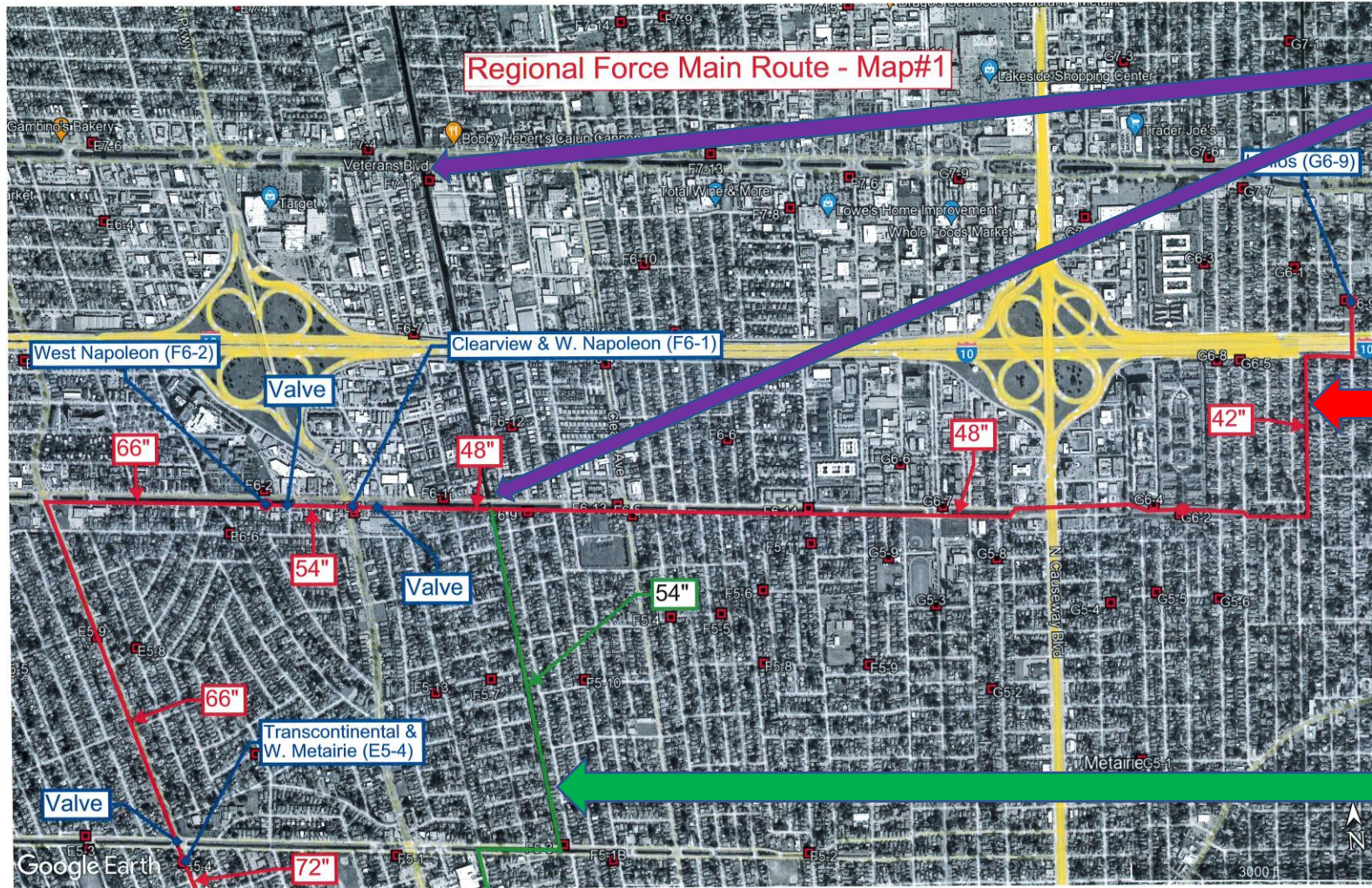
February 23, 2021

If the 66" Sewer Force Main on West Napoleon Ave. had been replaced with a HDPP pipe, the cost to prepare a break would have been approximately \$162,500 instead of the approximately \$1.5 million expense associated with the Price Brothers repair.



\$800 Million - 20 Year Sewer Pipeline Infrastructure Program

Obsolete Price Brothers Reinforced Concrete Pipe Replacement



New 24" HDPE
Force Main

Price Brothers
Reinforced Concrete Pipe
(5.3 Miles)

Steel Pipe



\$800 Million- 20 Year Sewer Pipeline infrastructure Program \$120 Million, 8 Year Priority Outlook

Gravity Sewer System Replacement/Rehabilitation

*Sanitary Sewer Evaluation Surveys (SSES) + Post-survey Rehabilitation and Repairs
Surveys Began in March, 2024 / Rehabilitation Begins in 2025*

SSES Phase 1				
Council District	Service Area ID	Service Area Name	Number of Manholes	Total Length of Gravity per Service Area (ft)
1	P-12-7	Bellemeade & Ginnette	48	11,836
1	P-14-1	Stonebridge & Trapp	8	1,549
1	P-12-11	Commerce & Vernon	45	10,468
2	M-11-1	5th & 9th	147	40,222
2	L-12-3	Patriot & Avenue G	161	38,814
2	F2-3	Elmwood & Mounes	100	22,682
3	N-13-12	Keithway & Glen Oak	62	17,730
3	N-13-14	Keithway & Clover	28	8,772
3	N-13-16	Cimwood & Touchwood	26	7,201
4	C5-1	Mississippi & 21st	54	16,349
4	D5-3	Upland & Balter	99	25,825
4	C4-1	Sibley & Boone	60	17,862
5	G4-4	Gruner & Loumor	133	33,332
5	G7-8	Ridgelake & 25th	31	6,055
5	G4-3	Derbigny & Arnoult	109	21,750
		Totals:	1,111	280,447



2022 Sewer Bond Program

\$15 Million Priority Gravity System Rehabilitation

Council District	Service Area Name	Number of Manholes
1	Whisper & Flamingo	54
1	Terry Parkway & Harvard (Terrytown II)	242
2	Midway & Jefferson Highway	146
2	Transcontinental & W Metairie	88
2	13th & Farrington	137
3	Rue Louis Phillippe & Melba	28
3	Wayne & Angela	36
3	Glen Della & Church	48
3	41st & Gardere	55
3	Highway 90 & Avondale Garden	25
4	Kawanee & Page	152
4	Cleveland & Avron	56
5	Helios	354
5	Suburban Canal & Veterans	69
Total:		1,490

\$4 Million Manhole Assessment + Rehabilitation
 Assessment Completed in 2023
 Rehabilitation Completed in March, 2024

Lift Station Service Areas	Main Pipe Lining (Foot)	Manhole Lining (Each)	Service Lateral Lining (Each)
Avondale South (FH-2) Hillcrest & Shawn (L-15-3)	16,500	360	425
West Napoleon (F6-2) Harvard & Veterans (E7-6)	13,000	50	165
Live Oak (C-8-1) Azalea & Gardenia (D-8-4)	2,100	25	55
Totals:	31,600	435	645

\$11 Million Subdivision Gravity System Rehabilitation Work
 Initiated in 2023
 Completed in March, 2024



2022 Sewer Bond Program

Lift Station System Permanent Backup Generator Expansion

\$15 Million to Add Generators to 15 Regional Sewer Lift Stations by 2026

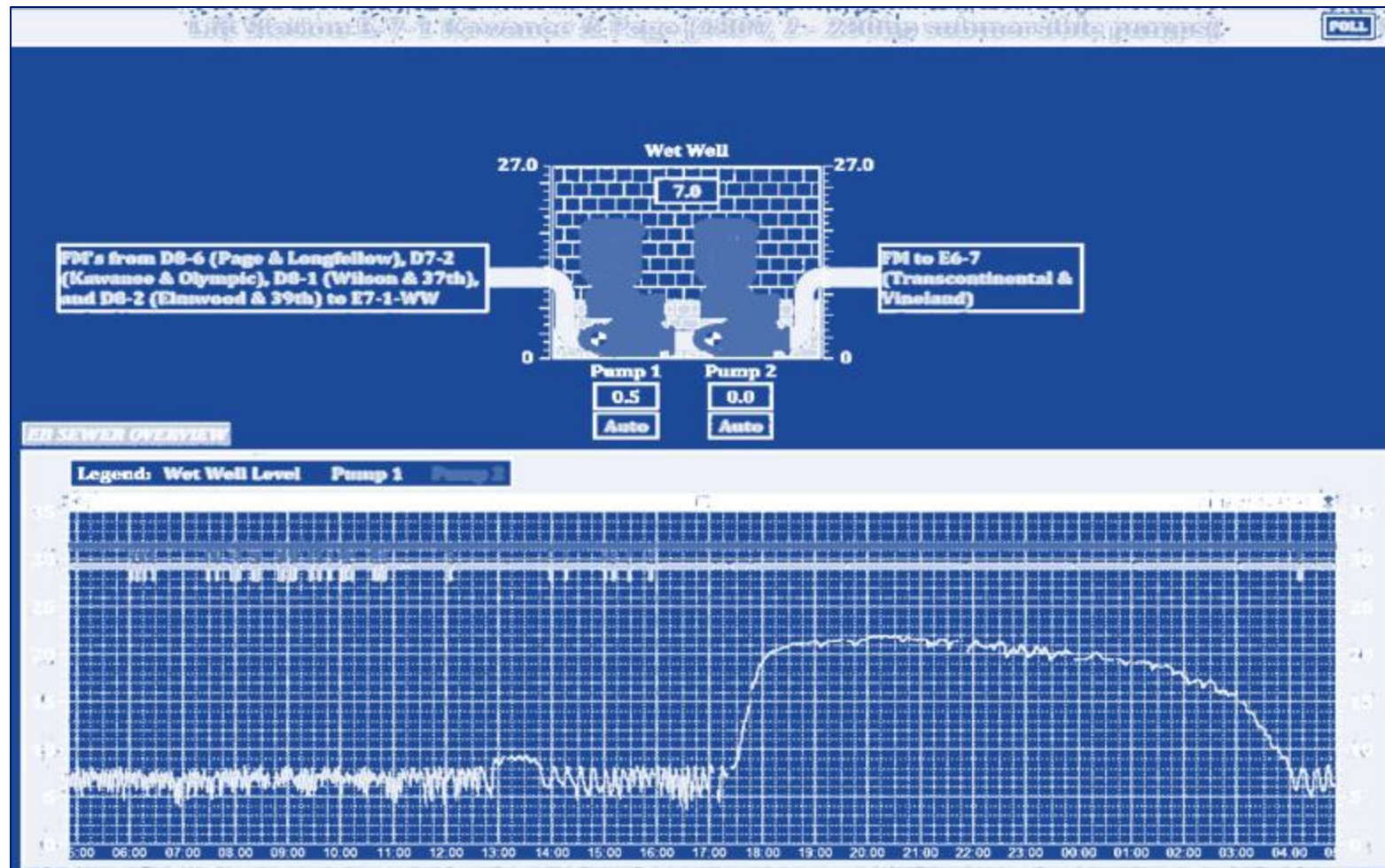
Jefferson Parish Sewer Lift Stations - Generator Priority List					
Lift Station	Lift Station Location	District	# of Tributary Stations	Total Cost (Est.)	Project Status
L-14-10	Lafitte-Larose & Pritchard	1	35	\$500,000	Completed
E3-7	Camp Plauche	2	32	\$750,000	Construction
E6-7	Transcontinental & Vineland	2	50	\$1,250,000	Design
L-12-5	Ames & Mayronne	3	43	\$1,250,000	Design
G6-9	Helios	5	44	\$1,000,000	Design
F6-2	W. Napoleon	5	35	\$1,000,000	Design
D6-5	Soniat Canal & W. Nap. Canal	4	18	\$750,000	Design
Q-11-6	Terry Pkwy & Harvard Terrytown #2	1	16	\$750,000	Design
E7-1	Kawanne & Page	4	11	\$750,000	Design
F-10-1	Avon. P.S. 90 & W. Tish (Avondale North)	2	15	\$750,000	Design
E3-1	Midway & Soniat Canal	2	15	\$750,000	Design
F7-11	Suburban Canal & Veterans	5	18	\$750,000	Design
F3-2	Karen & St. George	2	12	\$750,000	Design
M-14-3	Cousins & Barataria	3	11	\$500,000	Design
P-12-2	Fairfield & Lapalco	1	8	\$500,000	Design



2022 Sewer Bond Program – Scada System Expansion

\$3 Million For Remote Monitoring of Pump Performance

Added 151 Sewer Lift Stations in 2022/2023 (348 of 530 Stations Now Have SCADA)



SCADA Report -effect of I&I and rain water flows into our Sewer System



2017 Parish-wide Sewer Bond Program Status

In December of 2016, voters of Jefferson Parish approved the renewal of an existing 1% local sales tax (2022 thru 2042) to fund a Road and Sewer Bond Improvements Program

PROGRAM FUNDS AVAILABLE		
Local Bond Funds		\$131,000,000
State and Federal Funds	<u>\$ 34,800,000</u>	
Estimated Total Program	\$165,800,000	
PROJECT STATUS REPORT		
Projects Completed:		93
Projects Under Construction:		12
Projects in Bidding Phase:	1	
Projects Under Design:	<u>16</u>	
Projects in Bond Program:	122	
PROGRAM FINANCIAL REPORT		
Local Bond Program Funds spent	\$108,970,000	
State and Federal Funds:	<u>\$ 34,800,000</u>	
Total Funds Spent	\$143,770,000	



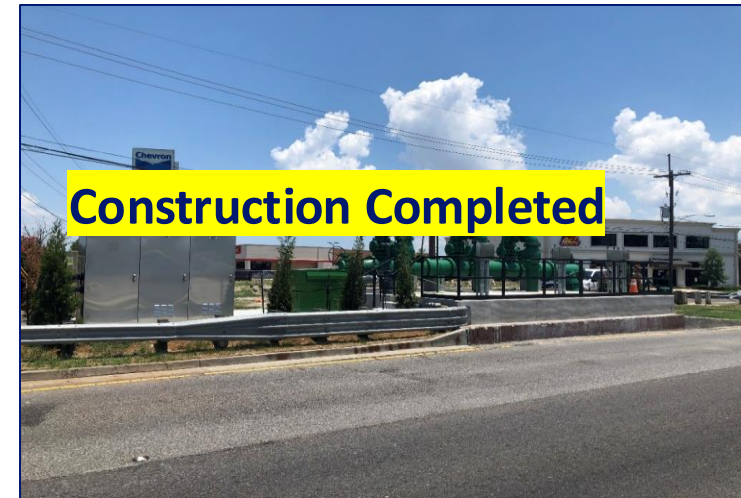
2017 Sewer Bond Program Lift Station Upgrades (68 of Proposed 81 Lift Stations Completed)



Houma & W. Esplanade
Lift Station Upgrade
Project \$1.5 Million)



Lake Timberlane
New Lift Station & Generator
(\$2.6 Million)



Transcontinental & Veterans
Lift Station Rehabilitation
(\$1.8 Million)



2017 Sewer Bond Program Treatment Plant Upgrades (Elmwood/BridgeCity/Harvey/Marrero/Rosethorn)



Construction Completed

New Rosethorne Wastewater
Treatment Plant in Lafitte
(\$10.3 Million)



Construction Completed

Elmwood Wastewater Treatment Plant
Clarifier Rehabilitation
(\$4.0 Million)



Construction Completed

Marrero Wastewater Treatment Plant
Administration Building
and Safehouse (\$3.7 Million)

Harvey Treatment Plant Electrical Switchgear Replacement – \$6.3 Million; Bid Accepted August 1, 2024
Marrero Treatment Plant Electrical Switchgear Replacement – Estimated cost \$7 Million; Bid Date Fall 2024



2017 Road Bond Program Status

In December of 2016, voters of Jefferson Parish approved the renewal of an existing 1% local sales tax (2022 thru 2042) to fund a Road and Sewer Bond Improvements Program

PROGRAM FUNDS AVAILABLE			
Local Bond Program Funds			\$268,500,000
Local Supplemental Funds			\$ 20,100,000
<u>State and Federal Funds</u>			<u>\$ 65,200,000</u>
Estimated Total Program			\$353,800,000
PROJECT STATUS REPORT			
	West Bank	East Bank	
Projects Completed:		20	19
Projects Under Construction:	1		2
Projects in Bidding Phase:	2		1
<u>Projects Under Design:</u>		<u>12</u>	<u>12</u>
Total Projects in Bond Program:		35	34
PROGRAM FINANCIAL REPORT			
Local Bond Program Funds Spent			\$135,854,000
Local Supplemental Funds Spent			\$ 20,100,000
<u>State and Federal Funds:</u>			<u>\$ 32,184,000</u>
Total Funds Spent			\$188,138,000



\$17.9 Million Severn Avenue Corridor Improvements (Veterans Blvd to West Esplanade Ave)



Pre-Construction

- larger subsurface drainage
- roadway replacement
- protected bike lanes
- 8' decorative paver sidewalks
- landscaping
- street & pedestrian lighting

Post-Construction



11th Street Improvements - \$7.8 Million

Phase I, Manhattan Blvd. to New Orleans Ave. (0.4 Miles) – *Completed*

Phase II, New Orleans Ave. to Queens Blvd. (0.4 Miles) – *Under Design*



\$12.1 Million David Drive Corridor Improvements (West Napoleon Ave to Veterans Blvd)



Pre-Construction

- new 12 inch water main
- replacement /lining of sewer house connection
- new subsurface drainage
- roadway widening (median/center turn lane)
- new street lights

Post-Construction



*Lapalco Boulevard Bridge
Over Bayou Segnette
Rehabilitation (\$4.0 Million)*



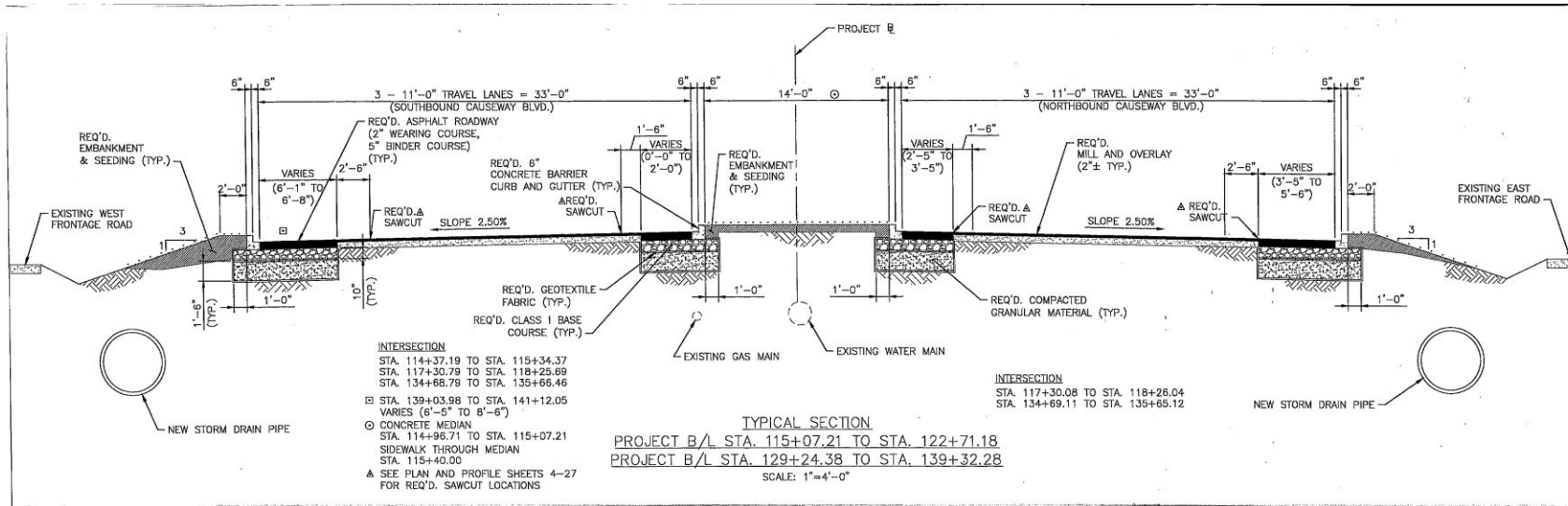
*Causeway Boulevard Bridge Over
Airline Drive
Rehabilitation (\$17.9 Million)*



- replace risers and bearing pads
- girder strengthening
- deck epoxy overlay & joint repairs

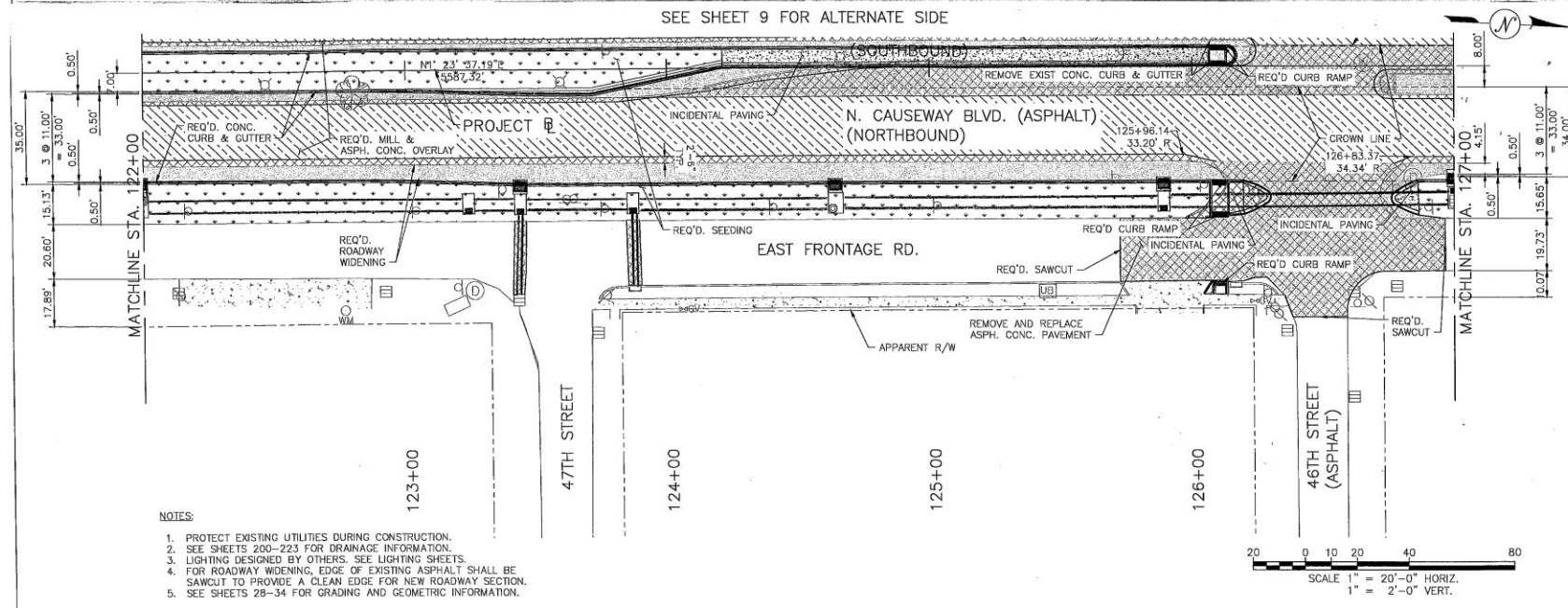


Causeway Boulevard Widening (Foot of Airline Drive Overpass to West Napoleon Avenue)



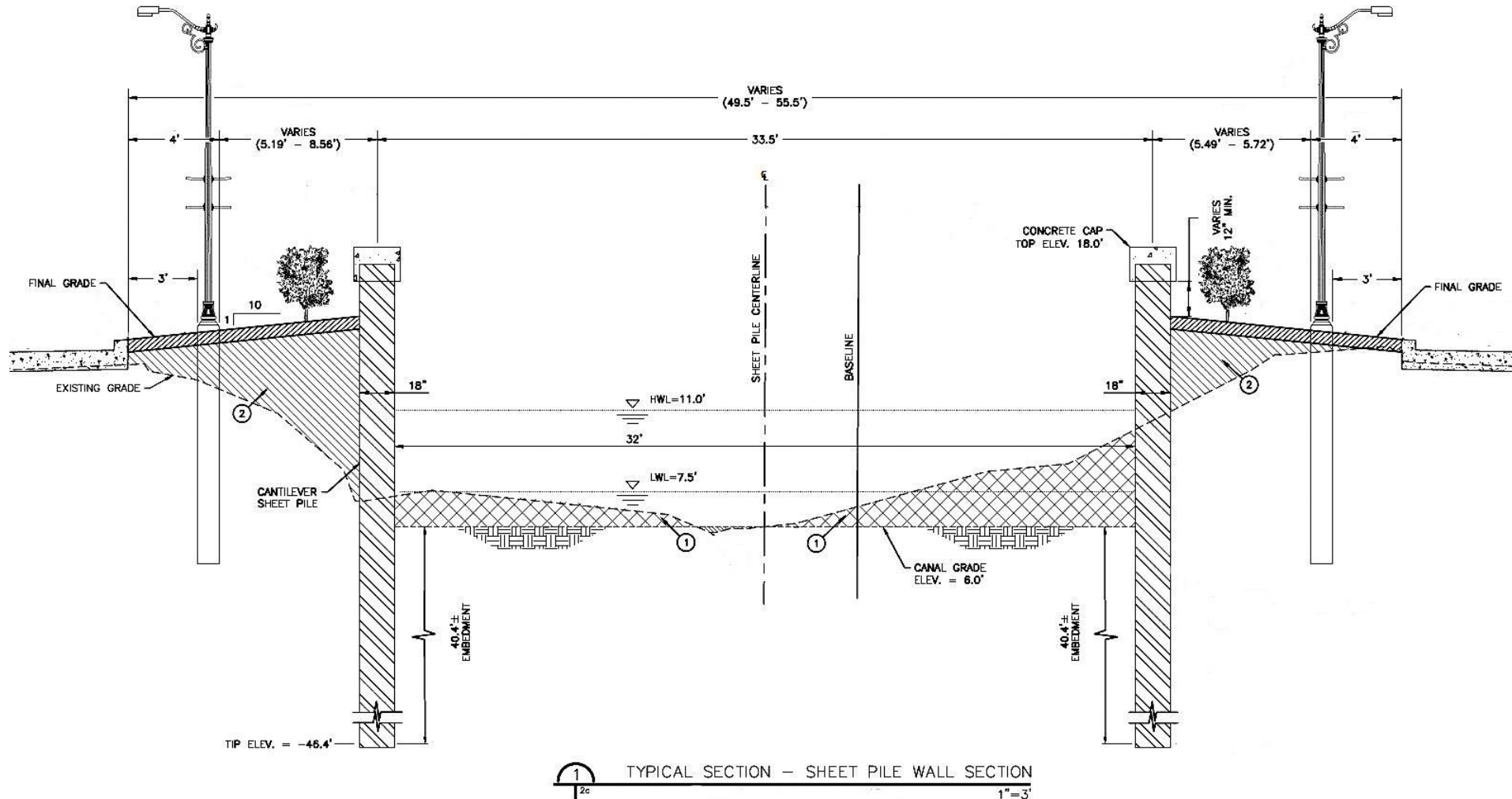
Estimated Cost
Roughly \$20 million

Estimated Bid Date
Early 2025



Bainbridge Street / Canal Rehabilitation (Veterans Blvd. to Terminal Drive)

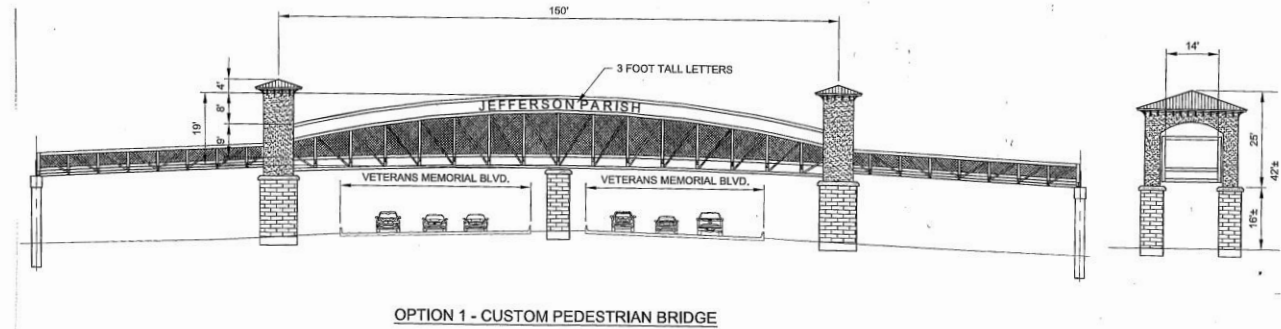
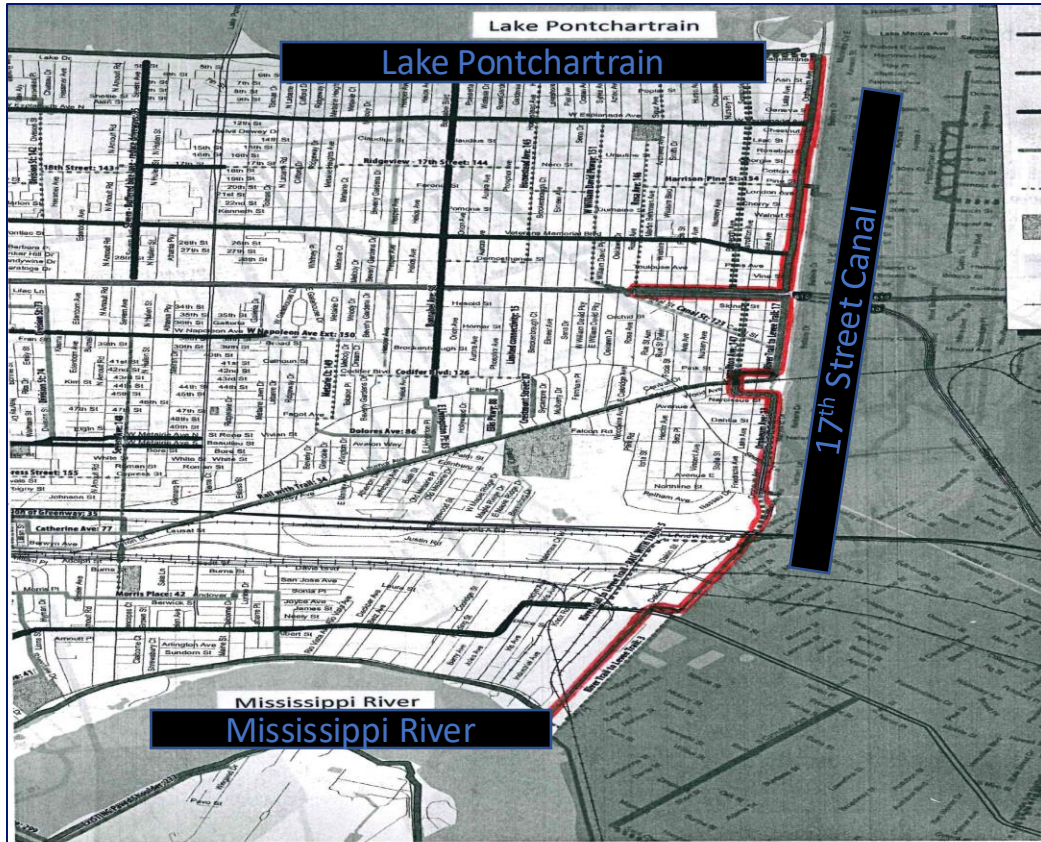
- Canal Stabilization (3,200 Feet)
- 4-Lane Street Replacement
- Street Lighting
- Landscaping



Rough Estimated Cost \$25 Million; Estimated Bid Date - End of 2024



River to the Lake Bike Path 6 Miles



Phase 1 – Old Hammond Hwy to Airline Drive
\$12 Million Rough Estimated Cost
Bid Date - 2026

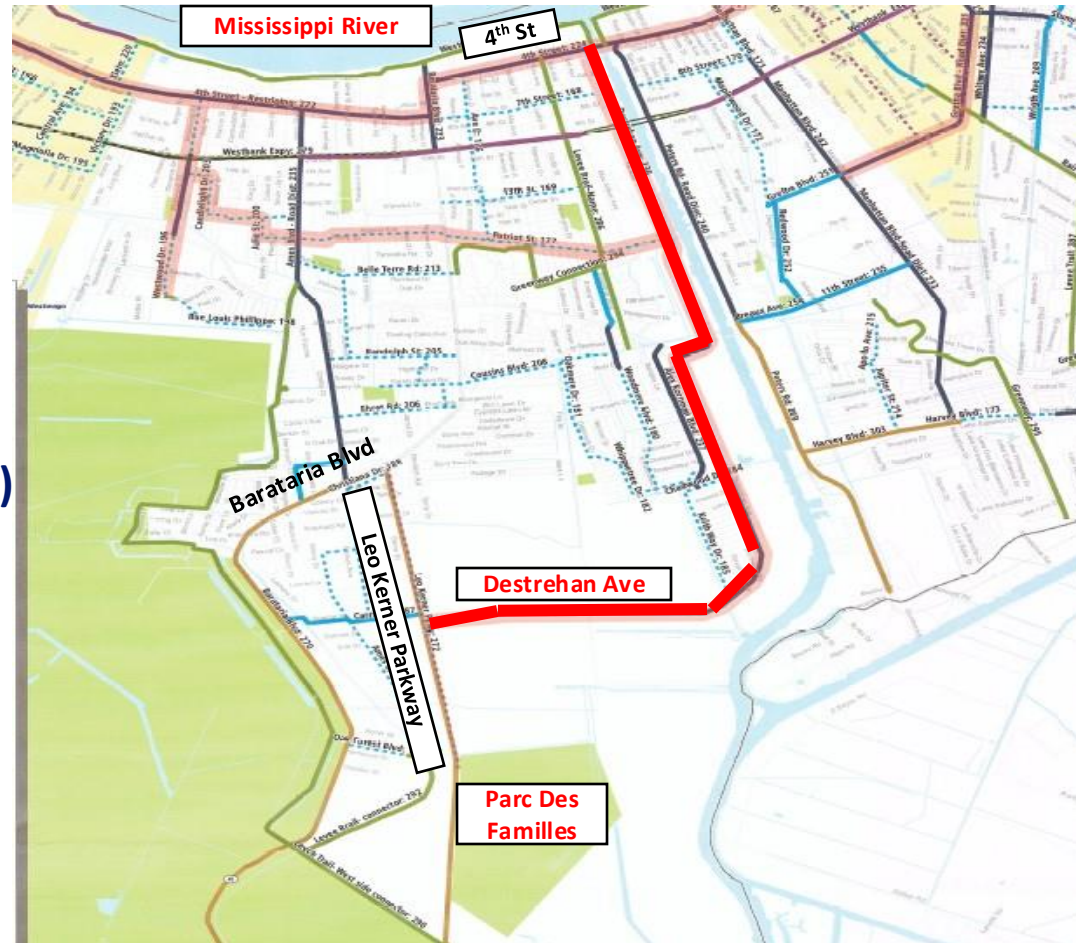


Destrehan Avenue Bike Path – 7 Miles (4th St to Leo Kerner Pkwy)

\$12 Million Rough Estimated Cost

**Chadwood Dr to Leo Kerner Pkwy
Phase 1 Bid Date – 2026**

**Leo Kerner Pkwy Path Completed
(Barataria Blvd to Parc des Familles)**



Harvey Blvd Improvements (Peters Rd – Manhattan Blvd)

Provide a two way, two lane asphalt roadway connection with subsurface drainage between Manhattan Blvd and Peters Rd. with the addition of a signalized intersection on Peters Rd. at future Harvey Blvd.



Rough Estimated Cost \$11 Million; Estimated Bid Date – End of 2025



2017 Road Bond Program

Completed July, 2024 - NB Transcontinental Drive Rehabilitation
(West Metairie Ave to Veterans Blvd) (\$4.5 Million)

Under Construction - West Metairie Avenue Rehabilitation
(Soniata Canal to Roosevelt Blvd) (\$17.8 Million)

2025 Construction - Latigue Road Extension (Foundry Rd to Live Oak Blvd)
New two-lane asphalt roadway with roadside ditches
(3,700 Ft) (\$6.5 Million)

2026 Construction – SB Manhattan Boulevard Widening (West Bank Expwy
to Gretna Blvd) – Addition of one asphalt pavement lane
with subsurface drainage (1 Mile) (\$5.5 Million)

2026 Construction – Dickory Avenue Extension (9th St to Jefferson Hwy)
New four-lane divided asphalt roadway with subsurface
drainage (1 Mile) (\$14 Million)



East Bank Regional Transportation Projects

Eastbound Earhart Expy. Exit at Dakin Street

Estimated Project Cost - \$15 Million

Estimated Bid Date - 2025



Project Partners

Jefferson Parish

Regional Planning Commission

LA DOTD



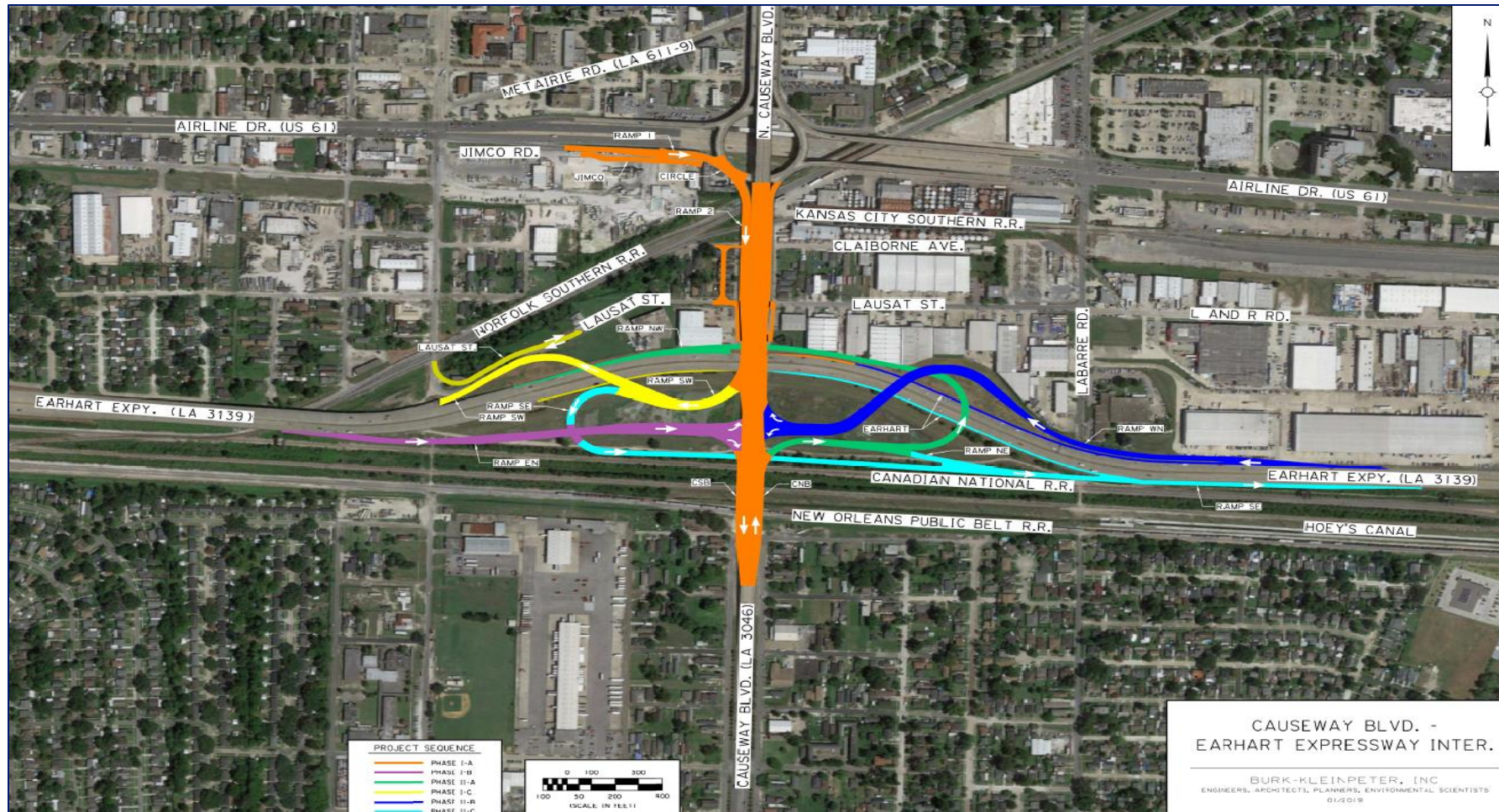
East Bank Regional Transportation Projects

Causeway Blvd./Earhart Expy. Interchange

Estimated Project Cost - \$300 Million

Phase 1A (2018 Const. Estimate - \$33 Million; 2023 Const. Cost after Bid - \$92 Million)

Project on Hold Due to Funding



Project Partners

Jefferson Parish

Regional Planning Commission

LA DOTD



West Bank Regional Transportation Projects

New Orleans and Gulf Coast Railway Relocation

Relocation of Railroad out of City
of Gretna and out of the Belle
Chasse Hwy Corridor (LA23) to the
Peters Road Corridor

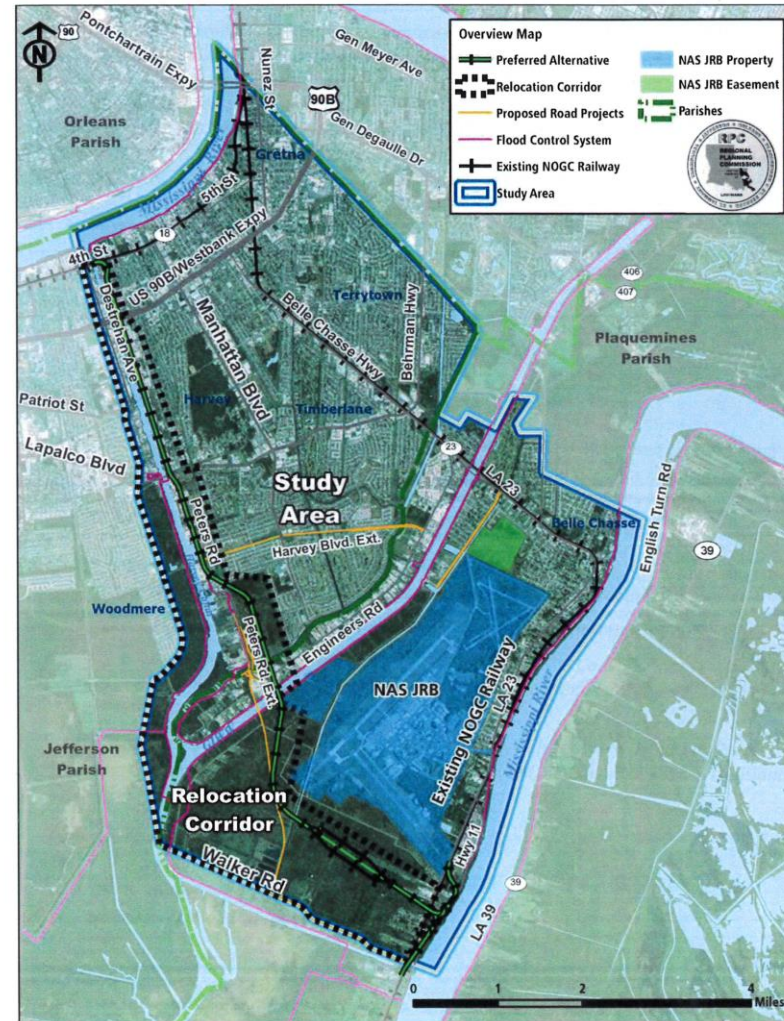
Reduction of Public At-Grade Rail
Crossings from 73 to 6.

Project Cost: \$330 Million

30% Design Underway

Environmental Assessment
LA 23 NOGC Railway Relocation PE/NEPA Project

Figure ES-1. Study Area Overview Map



ES-3

Project Partners

Jefferson Parish

City of Gretna

Plaquemines Parish

Regional Planning Commission

LA DOTD

Federal Railroad Administration



West Bank Regional Transportation Projects

Peters Road Bridge and Extension Project

Multi-purpose project for the Extension of Peters Road (LA 3017) from Engineers Road in Jefferson Parish to LA 23 in Plaquemines Parish to provide a direct connection between Jefferson Parish and Plaquemines Parish with an elevated crossing over the Intracoastal Waterway.

Project Cost: \$150 Million



Project Partners

Jefferson Parish

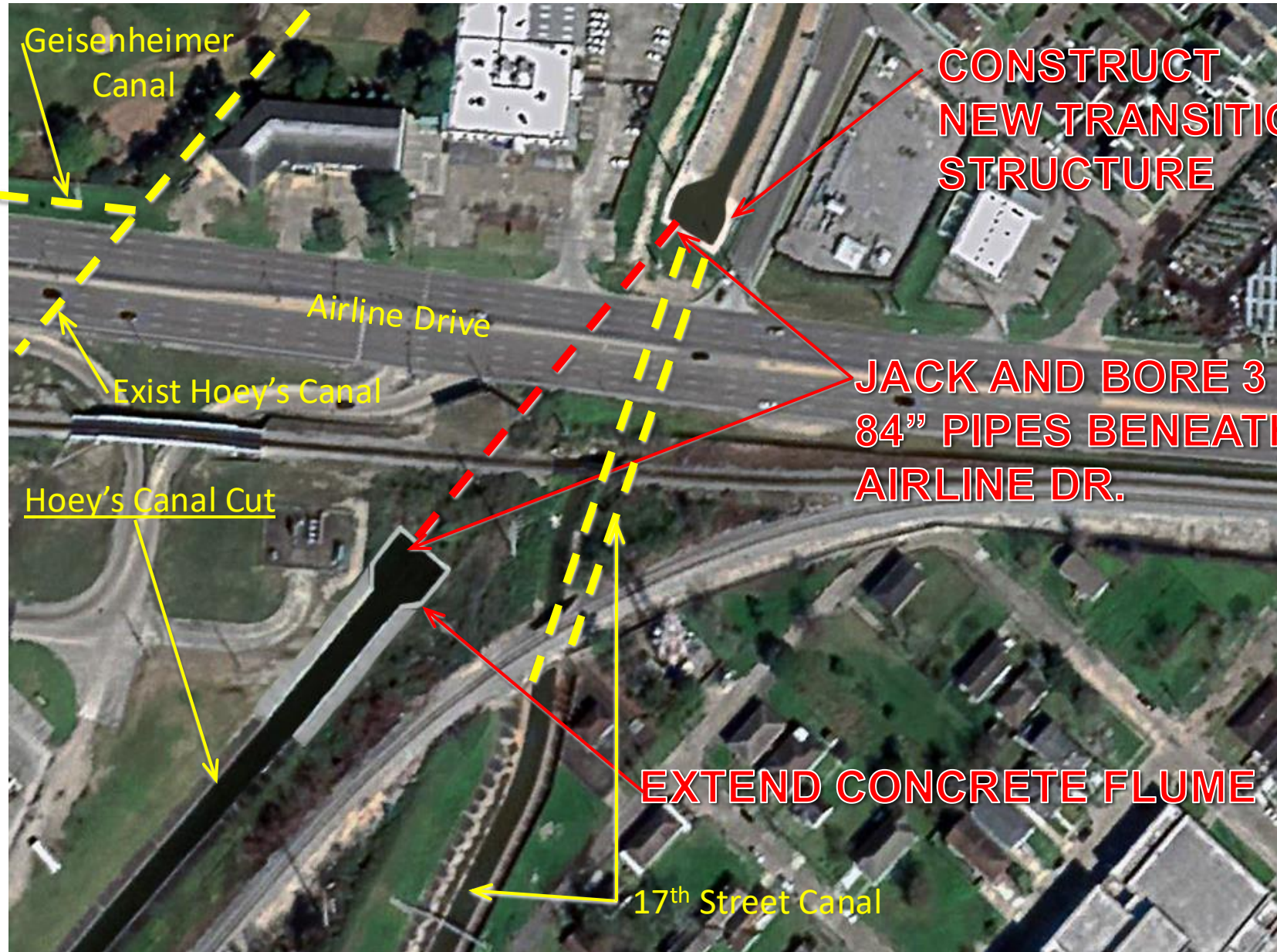
Plaquemines Parish

Regional Planning Commission

LA DOTD



**\$17 Million Airline Dr. at 17th St. Canal Drainage Improvements
(Estimated Bid Date - 2026)**

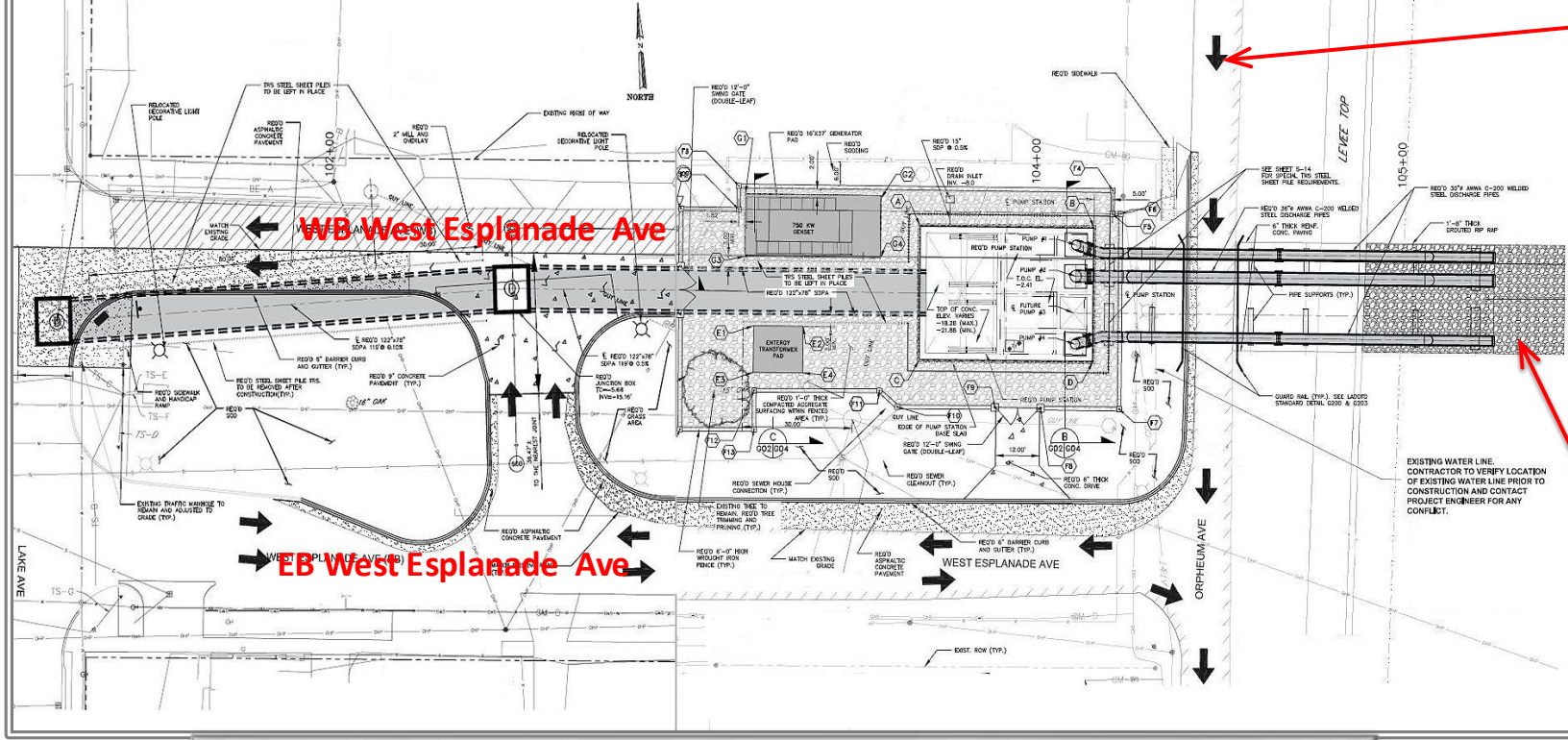


Major Drainage Projects

Hydraulic Improvement

Separate Geisenheimer Canal Flow
(Old Metairie Drainage Basin)
from Hoey's Canal Flow
(Old Jefferson Drainage Basin)

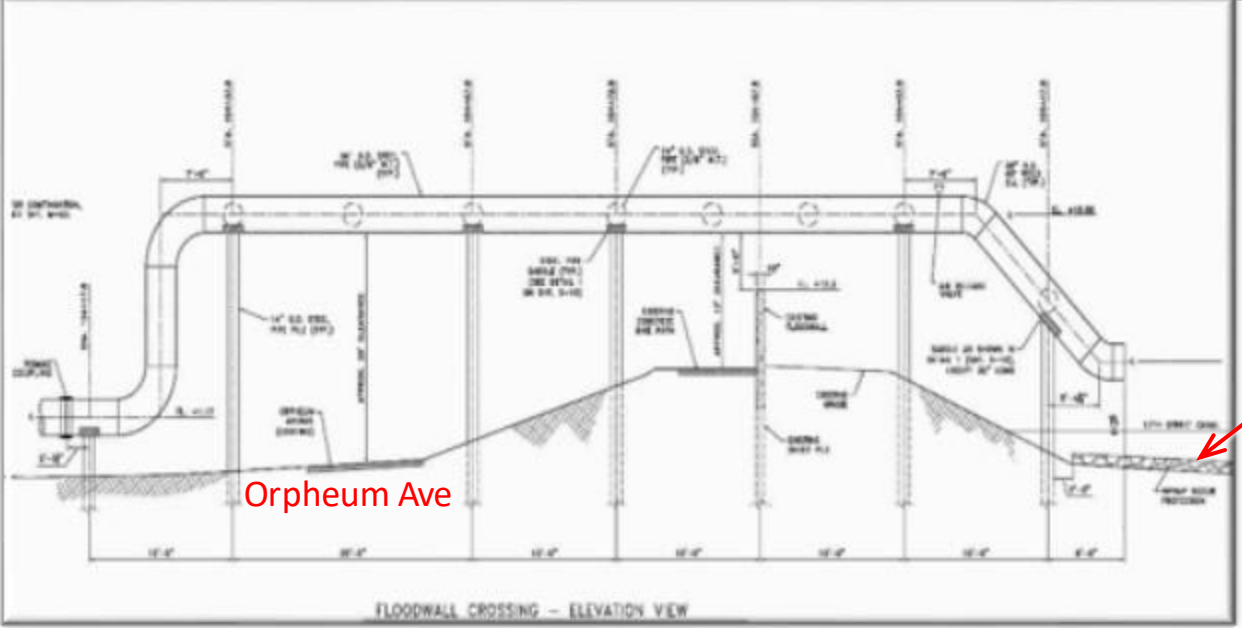




Major Drainage Projects

\$13 Million
West Esplanade Ave
Drainage Pump Station
(Estimated Bid Date – 2026)

- Beneficial Area**
- North – Old Hammond Hwy
 - East - 17th Street Canal
 - South - Georgia Ct
 - West – Nursery Ave



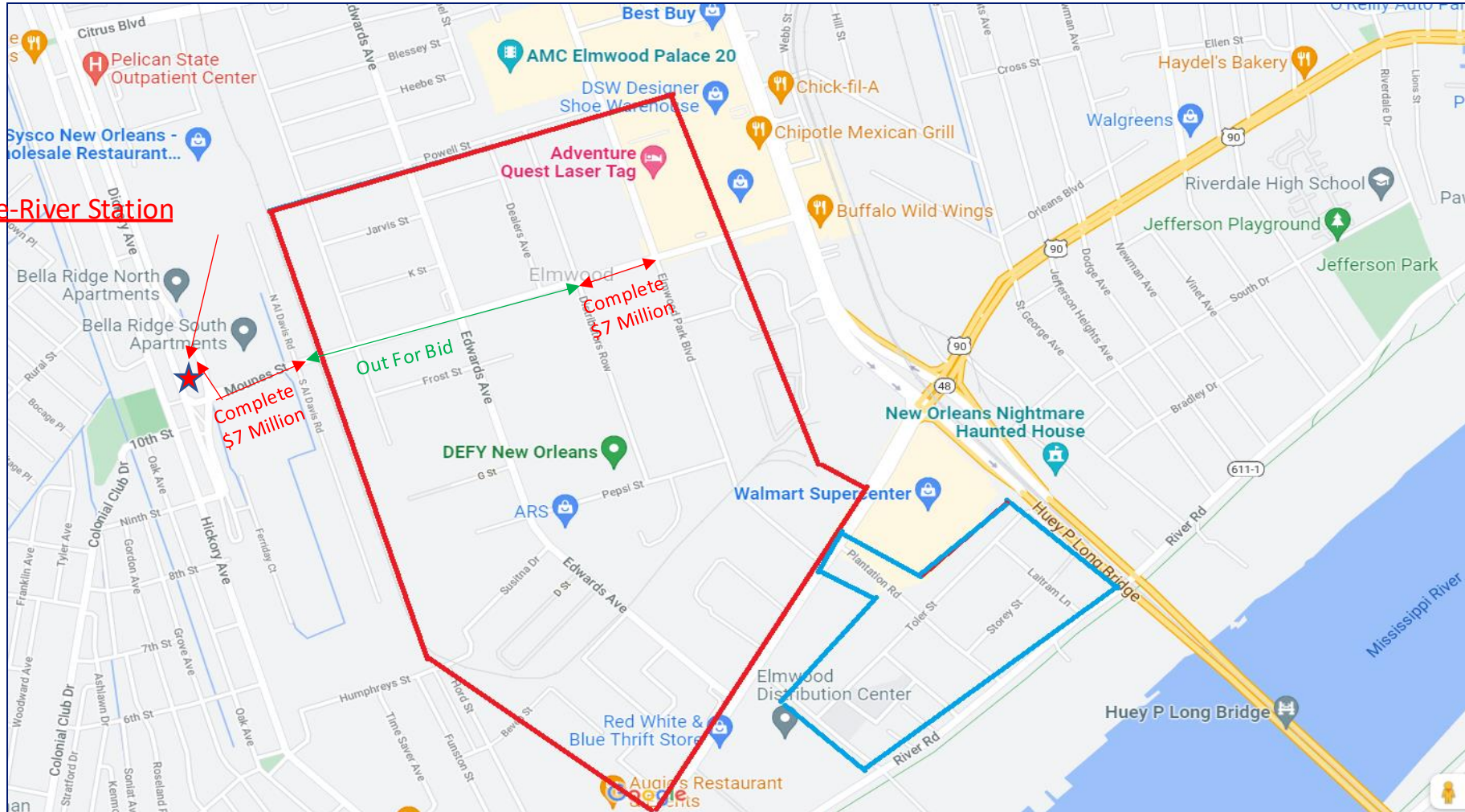
17th Street Canal



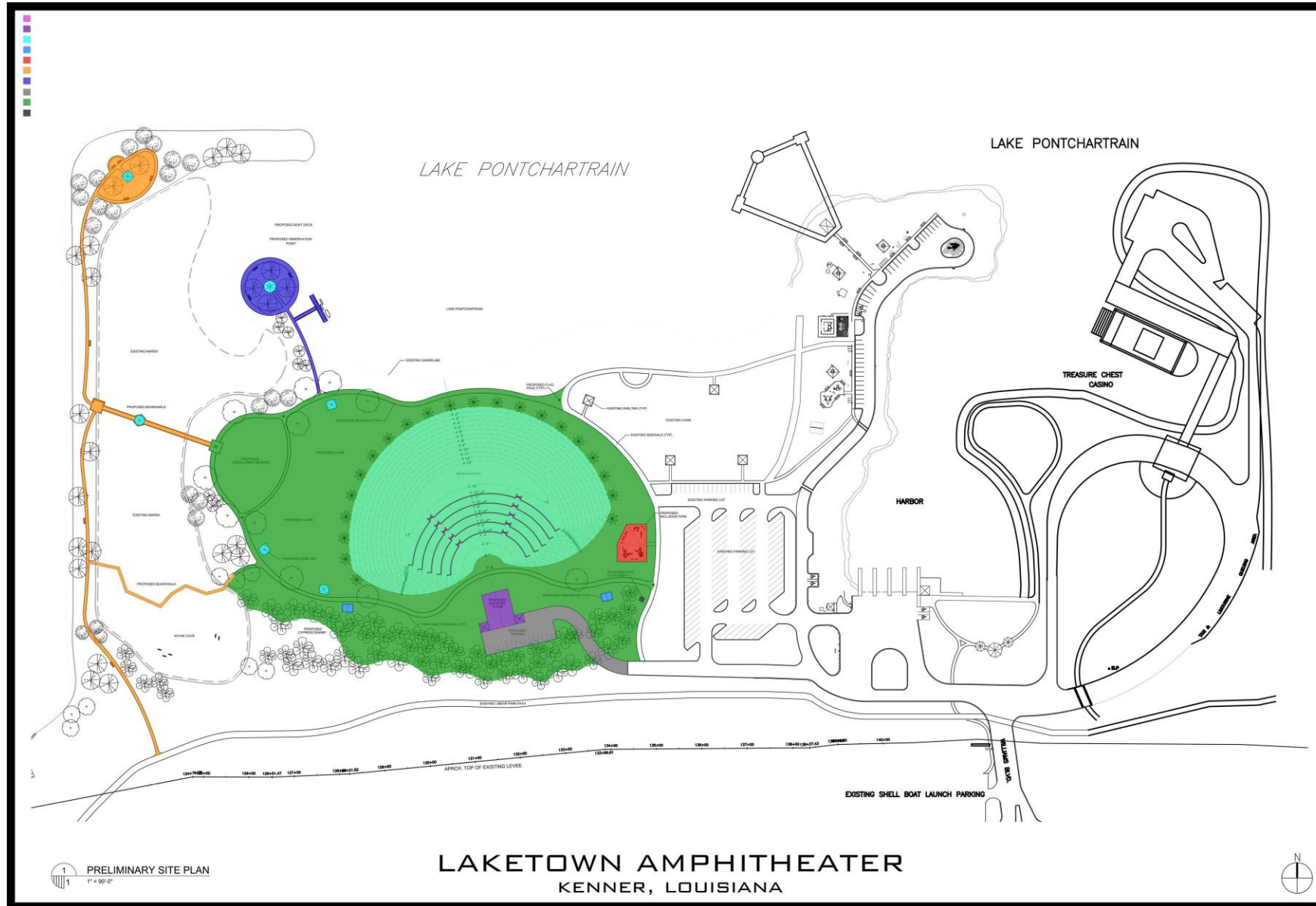
Major Drainage Projects

*Mounes Street 8 Ft Wide x 10 Ft High Box Culvert
(Out For Bid)*

Pump-To-The-River Station



Coastal Restoration/Preservation/Education



- Amphitheater
- Stage
- Parking Lot
- Large Gazebo
- Small Gazebos (5)
- Toilet Rooms (2)
- Inclusion Park
- Marsh Boardwalk
- Observation Point
- Lawn/Wildflower Meadow
- Power Platform



Rough Estimated Cost \$15 Million; Estimated Bid Date – 2026

American Rescue Plan Act Funds (ARPA)

Act of Congress that granted state and local governments funding to mitigate the significant negative financial impacts of the COVID-19 pandemic

Jefferson Parish received \$84 million in federal funding

Transformational projects all throughout the parish that focus on aging infrastructure, economic development and more

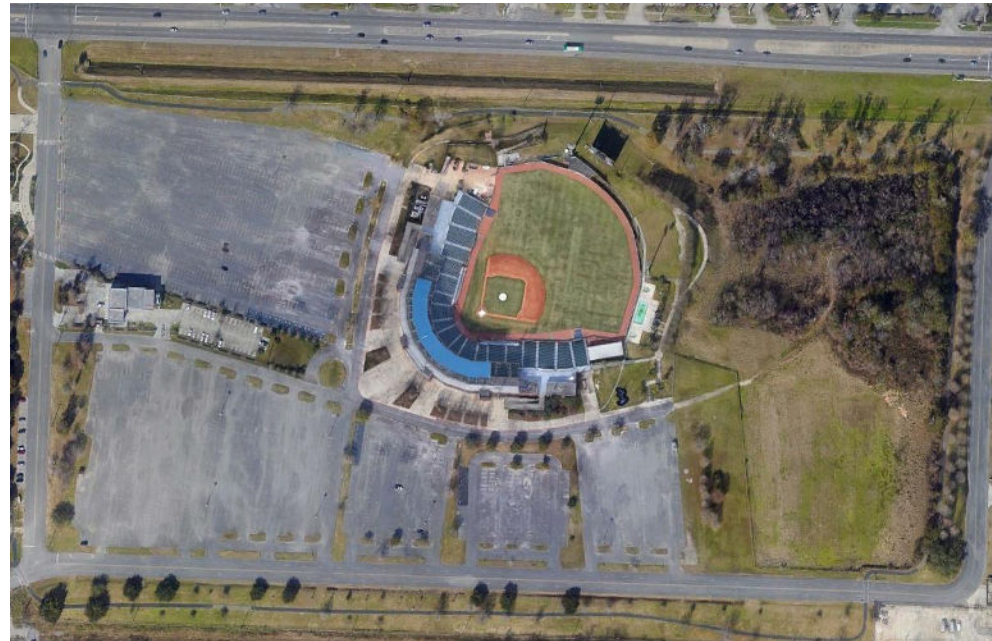


American Rescue Plan Act (ARPA) Funds \$15 Million

(Applying for State Matching Funds with Louisiana Stadium and Exposition District)



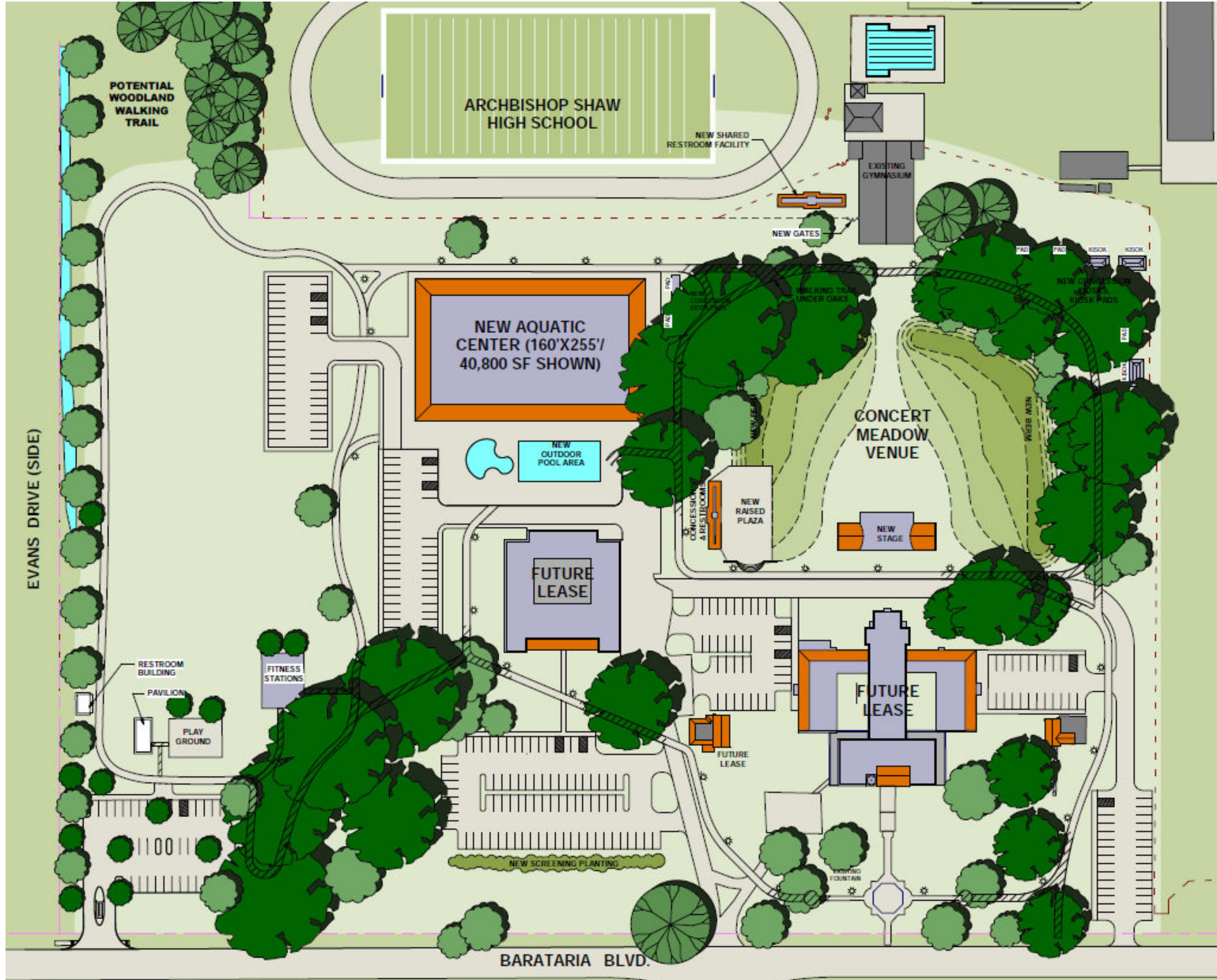
Alario Center Improvements



Shrine on Airline Improvements



AMERICAN RESCUE PLAN ACT (ARPA) FUNDS



Hope Haven
Campus Improvements



Sewerage and Water Board Task Force

Drainage System Overview

Sewerage and Water Board Major Drainage System Overview

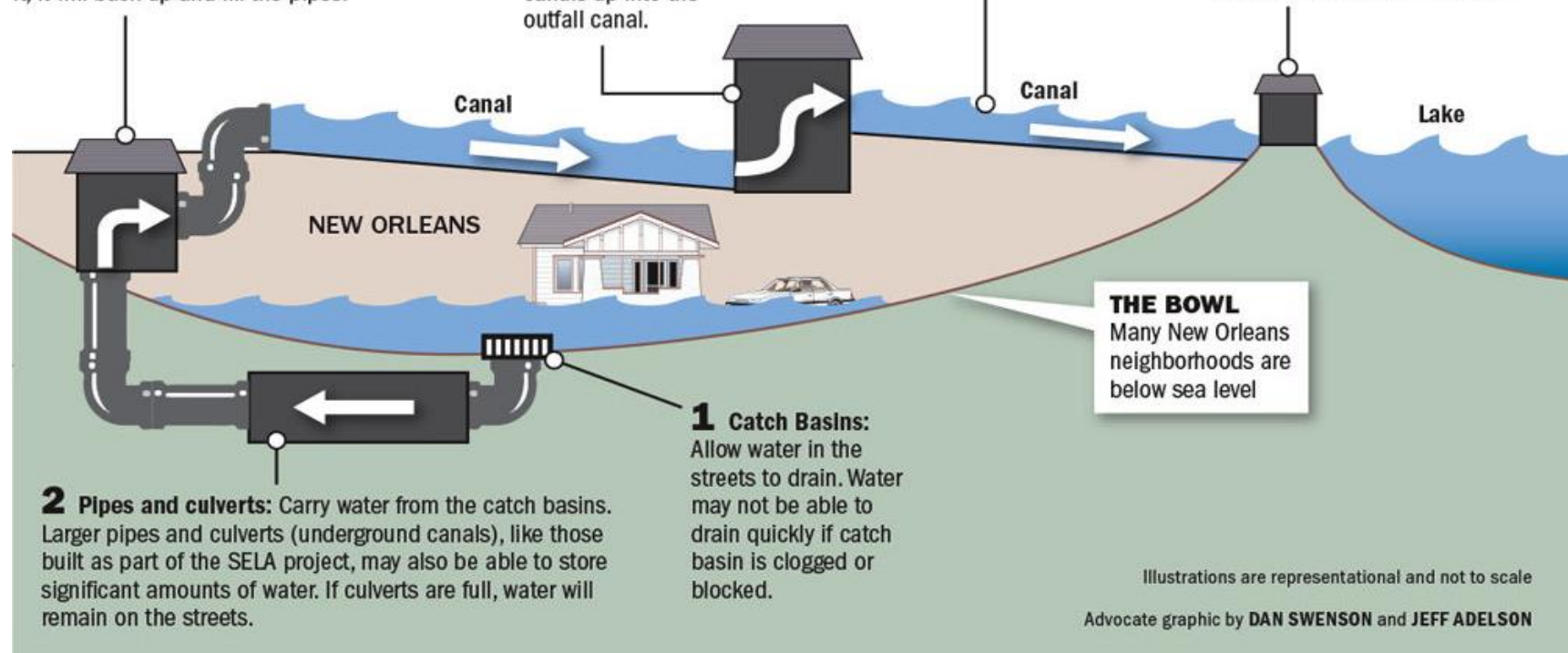
New Orleans sits below sea level and is shaped like a bowl. Rainwater can not drain out of the city because it can not defy gravity, so it must be pumped out. The system in New Orleans can only handle 1 inch of rain for the first hour and only 0.5 inches every hour after that. One location in New Orleans was inundated with 9.6 inches in 4 hours on Saturday, far more than the system can handle.

3 Interior pumps: Pull water through the pipes and lift it to the outfall canals. When water is flowing into the pipes more quickly than the pumps can move it, it will back up and fill the pipes.

4 Outfall canal pumps: Stationed in the outfall canals, these pumps pull water from small or lower canals up into the outfall canal.

5 Outfall canals: Carry water to Lake Pontchartrain.

6 Permanent canal closures and pumps: These pump stations are only needed when the water level of the lake rises, such as during a tropical storm or hurricane, requiring the gates at the end of the outfall canals to be closed to prevent water from flowing from the lake into the city. Otherwise, these are typically not needed as gravity will carry the water to the lake.

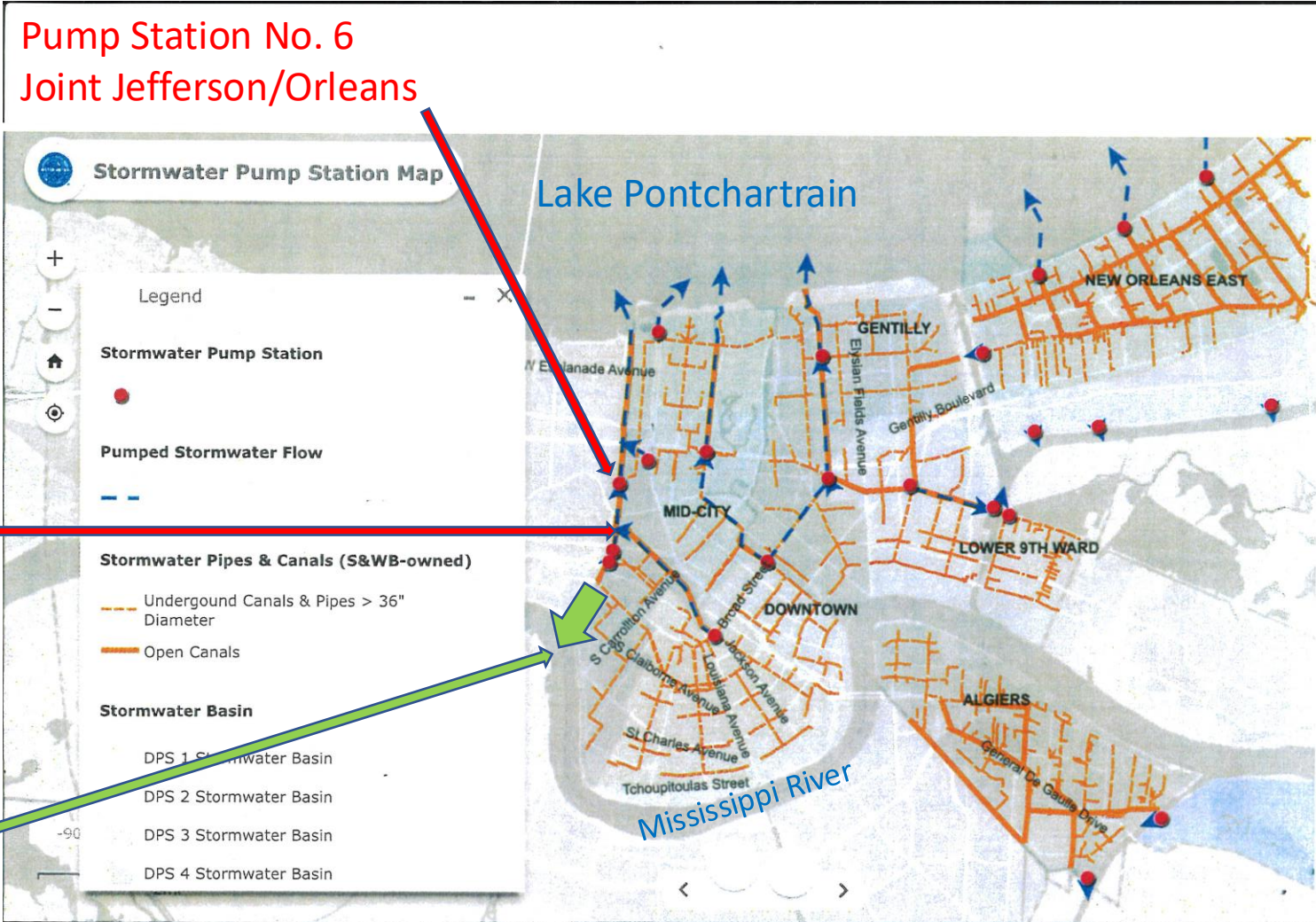


Sewerage and Water Board Major Drainage System Overview

Pump Station No. 6
Joint Jefferson/Orleans

Monticello/17th St Canal
Joint Jefferson/Orleans Canal
Jefferson – 2,550 Acres
Orleans – 8,300 Acres

Pump-To-The River
Regional Improvement



Robust Gravity System – Inlets, Pipes, and Canals / Box Culverts

Maintenance Program:

- Clean Inlets
- Clean and Video Pipes
- Clear Canals / Box Culverts

Improvement Program:

- Upgrade Local Subsurface System to 10-Year Design Storm
(Priority Based on Repetitive Structure Flooding)

Robust Pump Station System

- Redundant Capacity (Multiple Pumps with Excess Capacity)
- Redundant Power (Generator at Small Stations & Multiple Generators at Large Stations)
- Automation with Redundancy
- SCADA (Water Levels, Pump Performance, Generators)
- Prompt Equipment Restoration / Replacement (As-Needed Maintenance Contracts / Declared Emergency for Quick Bid, Spare Parts in Warehouse)
- Standard Operating Procedures, Employee Training, Stand-By Personnel, 24 Hour Weather Monitoring

CONNECT WITH US



www.JeffParish.net



Text **JPALERT** or **JPNOTICIAS** to
888-777 to receive regular updates.



*Open Camera app, hold device so that QR code appears in the Camera app's viewfinder. Your device recognizes the QR code and shows a notification. Tap the notification to open the link associated with the QR code.

