







**Marconi Bikeway to Lakefront**

**Greenway-City Park Spur**

**Greenway Trail Completion:  
1/2 mile to Cemeteries Transit Center**

The 3.1 mile Lafitte Greenway is the backbone of New Orleans bike network  
  
> 375,000 people use the Greenway annually.

The Lafitte Greenway connects neighborhoods, job and academic centers from the CBD, French Quarter and Bio-District to Mid-City.



CITY PARK

JOHN  
DAVIS  
PARKWAY

DAVIS PARKWAY

JEFFERSON

21

HOWARD AVE  
JULIA











© 2021 Google

© 2021 Google





















**12,000+**

Community members reached  
through events

**1,600**

Residents joined our  
Get Fit classes

**500+**

Volunteers helped us maintain  
our green spaces

**1,000**

Average  
daily users

**4,000**

Daily users during Carnival  
& Festival season

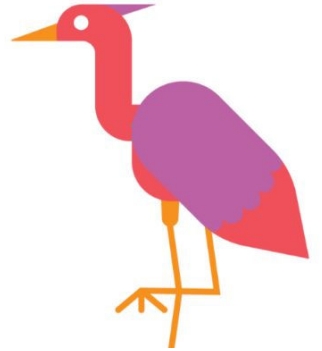
**500,000+**

Trail users annually

# lafitte greenway: the ultimate connector

**The Lafitte Greenway is a place where New Orleans can see the best version of itself.**

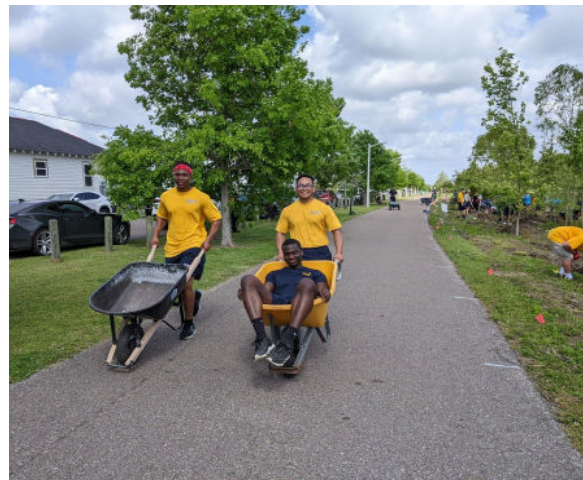
We are a 2.6-mile long linear park where New Orleanians come to gather, to exercise, to enjoy nature, to ride bikes, to hear local music, to see beauty, to discover something new, to rediscover something old.





















# GET FIT the greenway

**FREE**

## SPRING SERIES

March 11 - May 6

Free fitness classes every day of the week!  
+ A NEW SUNDAY CLASS!

**Mondays**

**N. PRIEUR**

**YOGA**

The Ohm Well

6 PM

**Wednesdays**

**N. PRIEUR**

**HIP HOP  
KICKBOXING**

NDO Energy

6 PM

**Thursdays**

**GREENWAY PLAZA**

**MARKET  
MARCH**

Walk 1 mile with us and get \$5 to the  
Farmers Market upon completion!

4:30 PM

**Fridays**

**N. MIRO**

**STRENGTH  
TRAINING**

Anew Fitness

8:30 AM

**Sundays**

**N. PRIEUR**

**BOUNCE YA  
BRASS**

Move Ya Brass

10AM

500 N. Norman C.  
Francis Pkwy

**GREENWAY STATION**



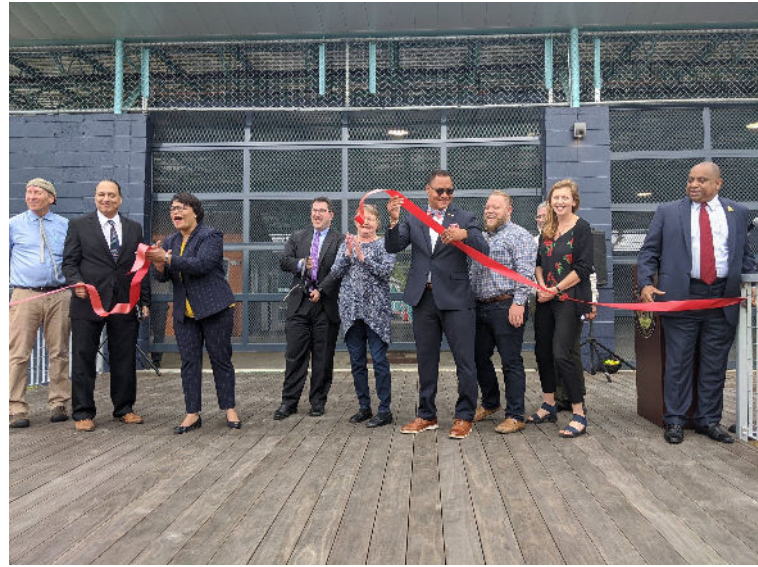
**FitNOLA**  
Classes now  
thru June 24

**Tuesdays:**  
TRX Boot Camp  
6PM

**Thursdays:**  
Boot Camp  
6PM

**Saturdays:**  
Cardio Blast  
10AM







# ***Market March Madness***

***5,000 community members  
31 farmers market vendors  
27 art vendors  
13 activities  
8 fitness classes***



Bubble Lady Linda



Bike Easy Bike Rodeo



Visit from Council member J.P. Morrell

***Basketball activities  
Tasting demos  
Cooking demos  
Marketeers kid activities  
Blue Bikes helmet giveaways  
Market Mommas meet up***













SHAKESPEARE'S

# TEMPEST

REIMAGINED

THE  
NOLA  
PROJECT  
THEATRE FOR THE BOLD

NORD  
COMMISSION

FRIENDS OF  
lafitte  
greenway

MAY 8-25  
LAFITTE GREENWAY

ADAPTED + DIRECTED BY  
JAMES BARTELLE























**WHAT'S NEXT FOR THE GREENWAY?**





## Lafitte Greenway Partnership

2024-2027 Strategic Plan



### Improve the Environment

Action	Metrics/Milestones	Future State
<b>Expand Stormwater Management</b>	<ul style="list-style-type: none"> <li>Submit a Federal Funding Application for Greenway Flow by February 2024</li> <li>Expand Greenway Plaza Raingarden to N Lopez Street</li> <li>Develop Pilot partnerships to expand workforce development opportunities in green infrastructure sector for young people</li> </ul>	The Lafitte Greenway is providing substantial ecological services, including surface level water storage and sub-surface storage which results in significant reductions to routing flooding in Greenway-adjacent neighborhoods
<b>Expand Reforestation/Tree Canopy</b>	<ul style="list-style-type: none"> <li>Prepare a planting plan for the Broad to Claiborne segment of Greenway</li> <li>Plant additional 500 trees throughout the Greenway</li> </ul>	The Greenway is significantly contributing to the reforestation of New Orleans, providing needed shade and reductions in extreme heat temperatures

### Amplify New Orleans Culture

Action	Metrics/Milestones	Future State
<b>Grow Greenway as a Destination for Public Art</b>	<ul style="list-style-type: none"> <li>Create an equitable intake process for new public art</li> <li>Bring 3 new public art sculptures/murals to Greenway in a diversity of locations and artists</li> </ul>	Greenway is a citywide destination for public art and artists
<b>Grow Greenway as a Destination for Public Performances and Events</b>	Host 1 live performance (such as theatre) annually	Greenway is a citywide destination for public performances and events
<b>Grow Greenway as a Destination for Music</b>	Host 2 music events annually	Greenway is a citywide destination for music
<b>Grow Supernova as Marquee Greenway Event</b>	<ul style="list-style-type: none"> <li>Increase attendance by 15% annually with a goal of 15,000 by 2026</li> <li>Increase net revenues by 15% annually with a goal of \$150,000 by 2026</li> </ul>	Supernova is a widely-known, -supported, and -beloved event







# WALK THE TRAIL COMPLETION WITH US





## MEET AT MORNING CALL

### 5101 CANAL BLVD

## APRIL 21 9AM - 11AM



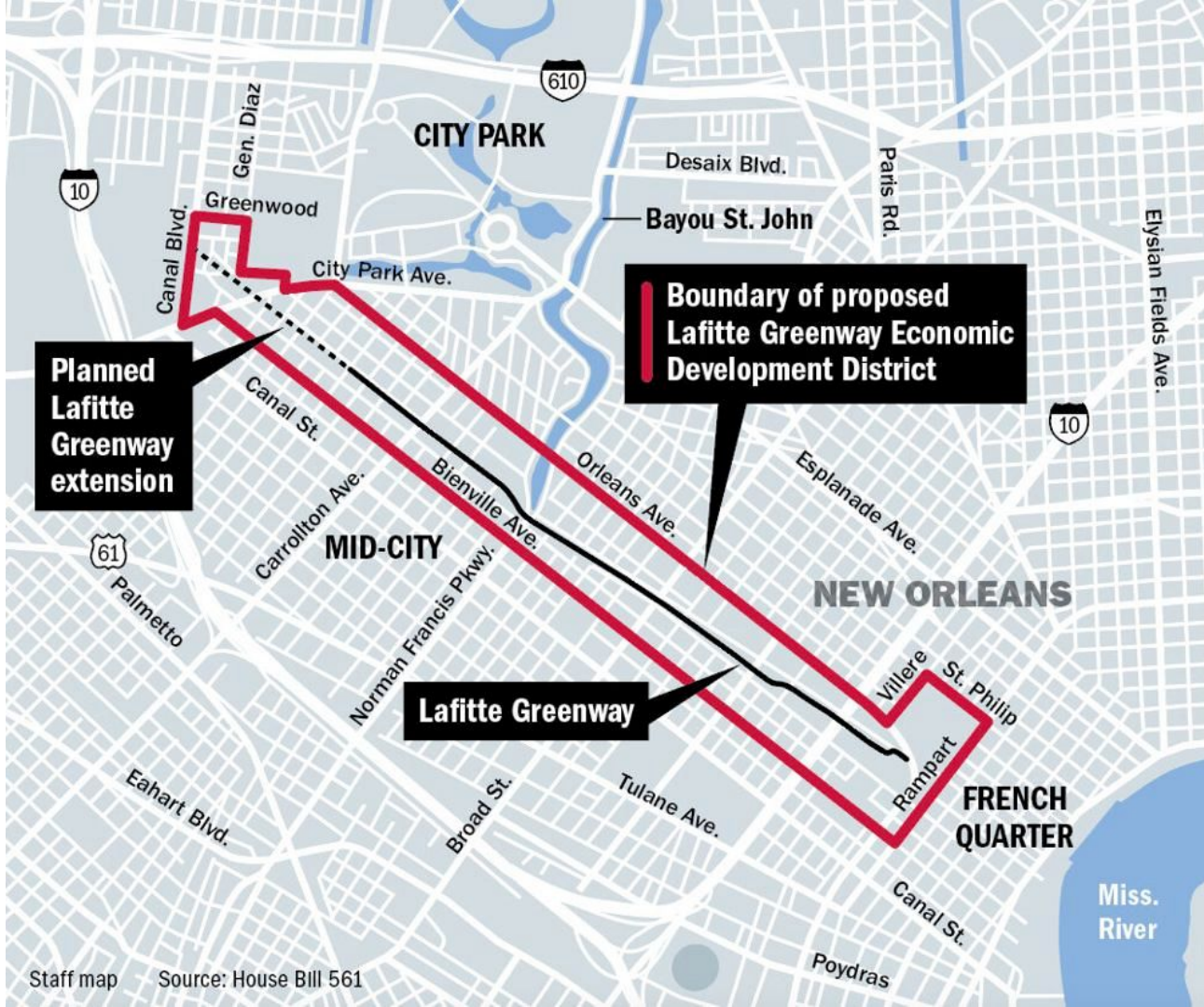


**NEW DEVELOPMENT ALONG LAFITTE GREENWAY:  
2015-2023**

- Lafitte Greenway Trail
- Trail Extension Route
- Boundaries of Mayor's Proposed Lafitte Greenway Economic Development District
- Bar/Restaurant/Cafe
- Entertainment/Cultural
- Housing
- Mixed-Use
- Office
- Public Improvement
- Retail

<b>Housing Units Built (Total)</b>	<b>1,752</b>
<b>Market Rate Rentals</b>	<b>635</b>
<b>Affordable Rentals</b>	<b>1,114</b>
<b>Short Term Rentals</b>	<b>3</b>
<b>Non-Residential Development (Square Feet)</b>	<b>440,164</b>







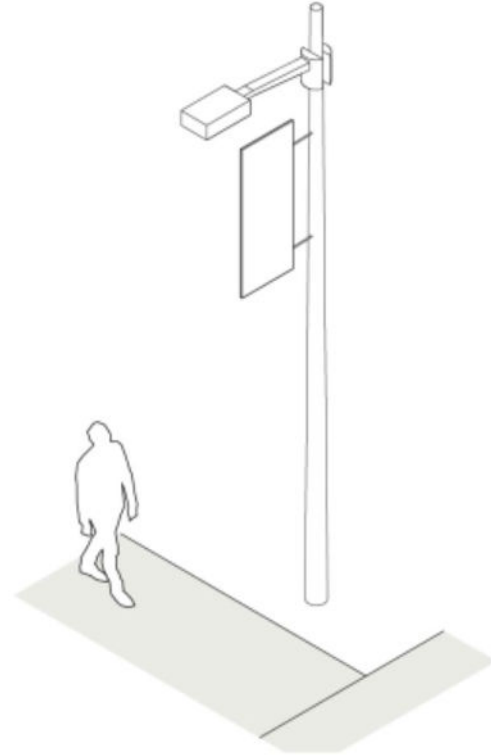




# BROAD TO BAYOU MASTER PLAN



# HOW YOU CAN JOIN US





# HOW YOU CAN JOIN US

## FRIENDS OF **lafitte** greenway **MEMBERSHIP TIERS**



**\$25**

YOUR GIFT HELPS SUPPORT  
VOLUNTEER DAYS



DID YOU KNOW THAT 500+  
VOLUNTEERS HELPED US  
TEND TO OUR TREE AND  
NATIVE PLANTINGS LAST  
YEAR?



**\$50**

YOUR GIFT HELPS SUPPORT  
TRAIL MAINTENANCE



DID YOU KNOW THE  
GREENWAY HAD 375.00  
USERS LAST YEAR?



**\$100**

YOUR GIFT HELPS SUPPORT  
FREE FITNESS CLASSES



DID YOU KNOW WE  
REACHED 2,000  
PEOPLE LAST YEAR  
THROUGH GET FIT?



**\$250**

YOUR GIFT HELPS SUPPORT  
FREE CULTURAL PROGRAMS



DID YOU KNOW THAT THE  
GREENWAY REACHED  
OVER 11,000 COMMUNITY  
MEMBERS LAST YEAR  
THROUGH EVENTS?



**\$500**

YOUR GIFT SUPPORTS TREES &  
NATIVE PLANTINGS



DID YOU KNOW THE  
GREENWAY PLANTED  
500+ CYPRESS TREES  
& NATIVE PLANTS?

**THANK YOU!**

